



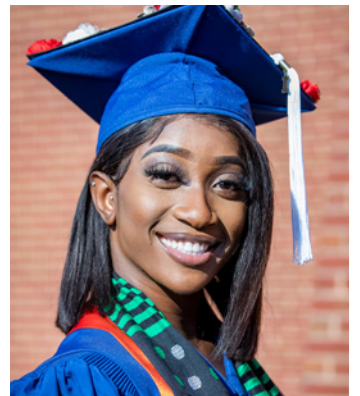
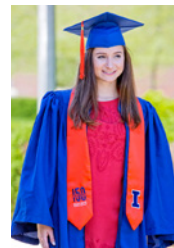
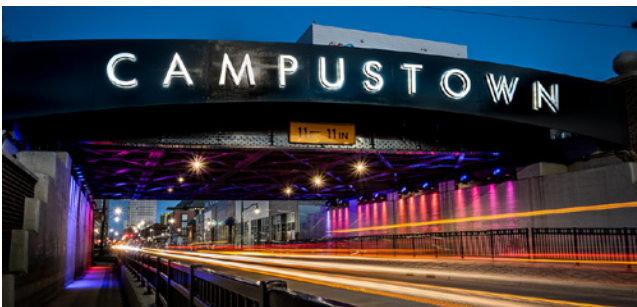
UNIVERSITY OF ILLINOIS URBANA-CHAMPAIGN

ILLINI SUCCESS

Individual achievements. Global impact.

Experience our points of pride.

ALL CAMPUS UNDERGRADUATE 2019-2020 REPORT



2019-2020 HIGHLIGHTS

UNIVERSITY OF ILLINOIS

The Illini Success initiative gathers data about the post-graduation pursuits of bachelor's degree recipients at the University of Illinois Urbana-Champaign. This report focuses on experiences of Illinois students who graduated during the 2019-2020 academic year, including August 2019, December 2019, and May 2020 graduation cohorts.

This was an unprecedented year, where our graduates and the university community navigated numerous challenges related to a pandemic that impacted our lives professionally, economically, socially, and personally. It is reasonable to expect that these challenges impacted our degree recipients' post-graduate pursuits and transitions. As such, in 2020 – as in all years, every invitation and discussion of the Illini Success survey was accompanied by invitations for our graduates to receive career services throughout their first-year post-graduation.

We acknowledge that our knowledge rate of graduate outcomes this year is lower than the past. Overall, we have identified the post-graduate outcomes of 57% of our graduates within six months of graduation (as compared to 75% last year). This knowledge rate varies considerably across colleges and majors.

Within the data we have collected, our known secured first destination rate remains high, at 91% of reporting graduates sharing that they are employed, continuing education, or engaged in volunteer or service work (as compared to 93% last year).

Recognizing the lower knowledge rates this year, we encourage caution in the interpretation of these results. Throughout the report, we provide information on sample size and knowledge rates to help our readers make appropriate use of the data.

We also wish to balance our presentation of outcomes. We extend our warm congratulations to graduates who secured employment, enrollment in continuing education, engagement in service roles, or other first destinations. We are proud of their accomplishments in these challenging times, and appreciate when they shared their success stories with us. Additionally, we extend our care and support to those who experienced prolonged challenges and may still be seeking their next steps. We hope that this report can be both a source of joy and of inspiration as we all work toward brighter days ahead.

SOME KEY FINDINGS FROM THE 2019-2020 GRADUATING CLASS

57%

knowledge rate of where our graduates have landed

46

U.S. states and 27 foreign countries were represented as first destination locations

91%

secured a first destination of employment (48%), additional education (42%), or volunteer position (<1%)

92%

of graduates report participating in experiential learning opportunities while at Illinois

75%

of Illinois residents secured their first destination within the state of Illinois (68% of graduates overall remain in Illinois)

35%

of graduates who participated in experiential learning opportunities received a full-time job offer as a result

\$65K

is the average salary reported by full-time employed bachelor's degree graduates across the university

CAMPUS OVERVIEW



2019-2020 Graduate Outcomes

Here is an overview of Illinois graduates' next steps after their undergraduate degrees. Graduates who "secured a first destination" include those who are employed (including military service), enrolled in a continuing education program, or serving in a volunteer organization. Graduates may also be seeking employment or education opportunities, or they have shared other plans (taking time for travel, family, etc.).

| College | Number of Graduates | Number Responded | Response Rate | Secured First Destination | Employed | Continuing Education | Volunteer/Service | Seeking | Other |
|------------------------------------|---------------------|------------------|---------------|---------------------------|----------|----------------------|-------------------|---------|-------|
| ACES | 697 | 500 | 72% | 84% | 42% | 42% | <1% | 15% | 1% |
| Applied Health Sciences | 644 | 403 | 63% | 90% | 21% | 68% | 1% | 10% | <1% |
| Education | 144 | 130 | 90% | 97% | 88% | 9% | 0% | 3% | 0% |
| Fine and Applied Arts | 400 | 176 | 44% | 90% | 43% | 47% | 0% | 10% | 0% |
| Gies Business | 782 | 667 | 85% | 97% | 66% | 31% | 0% | 3% | 0% |
| Grainger Engineering | 1,674 | 992 | 59% | 95% | 57% | 38% | 0% | 5% | <1% |
| Liberal Arts & Sciences | 3,412 | 1,619 | 47% | 90% | 41% | 48% | <1% | 10% | <1% |
| Media | 343 | 163 | 48% | 77% | 54% | 23% | 0% | 23% | <1% |
| Social Work | 78 | 58 | 74% | 97% | 7% | 88% | 2% | 3% | 0% |
| All Graduates | 8,060 | 4,630 | 57% | 91% | 48% | 42% | <1% | 9% | <1% |

Employment

Here are select employers and employment industries that hired 2019-2020 Illinois graduates. These lists are not exhaustive, but rather focus on the employers and industries that hired the greatest number of graduates overall, with attention paid to representing graduates from all Colleges. For greater detail, visit the College pages of this report and the Illini Success website.

SELECT EMPLOYERS

Employed more than 20 graduates

Accenture
Amazon
Deloitte
EY
KPMG
Microsoft
PricewaterhouseCoopers (PwC)

Employed more than 15 graduates

Epic Systems
JPMorgan Chase
Northrop Grumman
PepsiCo
Protiviti

Employed more than 10 graduates

Apple
Capital One
Caterpillar
Crowe
Facebook

Employed more than 100 graduates

Accounting
Banking & Financial Services
Consulting
Healthcare Services & Hospitals
Pre-K - 12 Education

Employed more than 75 graduates

Computer & Electronic Products
High Tech & Information Technology
Investment & Finance

Employed more than 50 graduates

Advertising, PR, & Marketing
Agriculture & Agri-Business

Medline Industries
University of Illinois Urbana-Champaign
W.W. Grainger

Employed more than 5 graduates

AbbVie
Alight Solutions
Amazon Web Services
Archer Daniels Midland (ADM)
Burns & McDonnell
Capgemini
General Motors
Google
IBM
John Deere
Motorola Solutions
Oracle
RSM
State Farm Insurance

Employed graduates

3M
Abbott Laboratories
Academy for Global Citizenship
Aerotek

AmeriCorps
BallotReady
Bayer Crop Science
Beck's Hybrids
Board of Election Commissioners
Booz Allen Hamilton
ByteDance
Carle Foundation Hospital
Chicago Public Schools
Cincinnati Children's Hospital Medical Center
City Year
College Possible
Collins Aerospace
Discover Financial Services
Dropbox
Duolingo
Echo Global Logistics
Grant Thornton
Harvest Table Foods
HealthScape Advisors
Illinois Farm Bureau
Jellyvision
LinkedIn
MasterCard
Mazda Motor Corporation
Micron Technology

Microsoft Research
Morningstar
NASA Johnson Space Center
National Institute of Allergy and Infectious Diseases (NIAID)
National Institutes of Health (NIH)
Pharmaceutical Product Development (PPD)
Procter & Gamble
ProvenAir Technologies
Qualtrics
Radio Flyer
Roblox
Sensient Technologies
SpaceX
Stratton Academy of the Arts
Synchrony Financial
Teach for America
The Climate Corporation
The Place for Children with Autism
U.S. Department of Agriculture
U.S. House of Representatives
Vanderbilt University Medical Center
Vanguard
VMWare
Yelp

SELECT INDUSTRIES

Employed more than 100 graduates

Computer Systems Design & Networks
Food & Beverage
Insurance

Employed more than 75 graduates

Computer & Electronic Products
High Tech & Information Technology
Investment & Finance

Employed more than 50 graduates

Advertising, PR, & Marketing
Agriculture & Agri-Business

Employed more than 25 graduates

Aerospace & Aviation
Business Services
Civil Engineering
Construction
Consumer Services & Products
Higher Education
Internet
Local, State, & Federal Government
Manufacturing
Research & Science
Retail Trade

Employed more than 10 graduates

Animal & Wildlife
Automotive
Biotechnology & Life Sciences
Chemicals
Electronics & Electronic Manufacturing
Environment & Natural Resources
Health, Wellness, & Fitness
Human Resources
Journalism, Media, & Publishing
Legal Services
Management Consulting
Medical Devices
Non-Profit & Philanthropy
Oil & Gas
Pharmaceuticals
Real Estate
Social & Human Services

Employed graduates

Sports & Leisure
Transportation & Logistics
Utilities and Renewable Energy
Architecture & Planning
Communication Services
Entrepreneurial & Start-Ups
Hotel, Restaurant, & Hospitality
International Affairs
Law Enforcement & Security
Mechanical & Industrial Engineering
Mining & Metals
Museums, Historical Sites, & Libraries
Performing & Fine Arts
Plastics & Rubber Products
Scientific & Technical Consulting
Veterinary
Waste Management

Annual Salary of Full-Time Employed Graduates

Across our 2019-2020 graduating class respondents, 61% of full-time employed respondents reported salaries, averaging \$65,178. In addition, 28% reported signing bonuses, with a median of \$5,000.

| College | Employed Graduates | Graduates Reporting Salary | Average Salary | 25th Percentile | 50th Percentile | 75th Percentile | Graduates Reporting Signing Bonus | Median Signing Bonuses |
|------------------------------------|--------------------|----------------------------|----------------|-----------------|-----------------|-----------------|-----------------------------------|------------------------|
| ACES | 201 | 118 | \$53,571 | \$46,000 | \$55,000 | \$60,000 | 26 | \$3,000 |
| Applied Health Sciences | 76 | 36 | \$47,034 | \$35,000 | \$48,000 | \$60,000 | 7 | \$5,000 |
| Education | 113 | 33 | \$45,934 | \$41,000 | \$44,500 | \$50,174 | — | — |
| Fine and Applied Arts | 66 | 26 | \$46,731 | \$42,000 | \$45,000 | \$50,000 | — | — |
| Gies Business | 436 | 271 | \$67,028 | \$60,000 | \$66,000 | \$73,000 | 176 | \$5,000 |
| Grainger Engineering | 553 | 424 | \$86,149 | \$70,000 | \$79,000 | \$100,000 | 273 | \$8,000 |
| Liberal Arts & Sciences | 638 | 363 | \$58,057 | \$41,000 | \$57,750 | \$72,000 | 121 | \$5,000 |
| Media | 85 | 45 | \$47,122 | \$38,000 | \$43,000 | \$54,000 | 9 | \$5,000 |
| Social Work* | 12 | 10 | \$33,480 | \$30,500 | \$33,000 | \$34,500 | — | — |
| All Graduates | 2,154 | 1,307 | \$65,178 | \$50,000 | \$65,000 | \$76,000 | 595 | \$5,000 |

* In cases where we have fewer than 10 employed graduates and fewer than 5 graduates reporting a salary in 2019-2020, we combine responses with the 2018-2019 class in order to provide salary information while protecting the confidentiality and privacy of survey respondents.

— If fewer than 5 full-time employed graduates from a College report a signing bonus in 2019-2020, the table indicates this with dashes as signing bonus information cannot be shared.

Continuing Education

Here we provide information about the graduate and professional school choices of 2019-2020 Illinois graduates. These lists are not exhaustive, but rather focus on the institutions and programs of study that enrolled the greatest number of graduates overall, with attention paid to representing graduates from all Colleges. For greater detail, visit the College pages of this report and the Illini Success website.

SELECT GRADUATE AND PROFESSIONAL SCHOOLS

Enrolled more than 800 graduates

University of Illinois Urbana-Champaign

Enrolled more than 20 graduates

DePaul University
Loyola University Chicago
Northwestern University
Rush University
University of Illinois Chicago
University of Michigan
University of Wisconsin-Madison

Enrolled more than 15 graduates

Carnegie Mellon University
Columbia University
Cornell University
Midwestern University
Stanford University
University of Chicago

Enrolled more than 10 graduates

Georgia Institute of Technology
Marquette University
Rosalind Franklin University of Medicine and Science
Southern Illinois University Edwardsville
University of Pennsylvania

Enrolled more than 5 graduates

Duke University
Eastern Illinois University
Elmhurst University
Governors State University
Illinois State University
Johns Hopkins University
Lewis University
Loyola University Chicago, School of Law
Loyola University Chicago, Stritch School of Medicine

Massachusetts Institute of Technology
New York University
Northern Illinois University
Purdue University
Roosevelt University
Saint Louis University
Southern Illinois University Carbondale
Texas A&M University
The Chicago School of Professional Psychology
University of California, Berkeley
University of California, Los Angeles
University of California, San Diego
University of Illinois Springfield
University of Illinois College of Law
University of Illinois College of Medicine
University of Minnesota-Twin Cities
University of Southern California
University of Washington-Seattle
Washington University

Enrolled graduates

Arizona State University
Boston Conservatory at Berklee
Bristol Old Vic Theatre School
Brown University
California College of the Arts
College of William & Mary
Colorado State University
Georgetown University
Harvard University
Illinois College of Optometry
John Marshall Law School
Lakeview College of Nursing
Oregon State University
Princeton University
Southern Illinois University, School of Medicine
St. Louis College of Pharmacy
Stockholm University
The Ohio State University
University of Hawai'i at Manoa
University of Oxford
Vanderbilt University
Weill Cornell Medicine
Yale University

SELECT AREA OF STUDY

Enrolled more than 100 graduates

Accountancy
Business & Management
Computer & Electrical Engineering
Health Professions & Sciences

Enrolled more than 50 graduates

Aerospace, Materials, & Mechanical Engineering
Biological & Biomedical Sciences
Civil, Environmental, & Industrial Engineering
Computer & Information Sciences
Education & Teaching
Legal Professions & Studies
Medicine
Psychology
Social Work

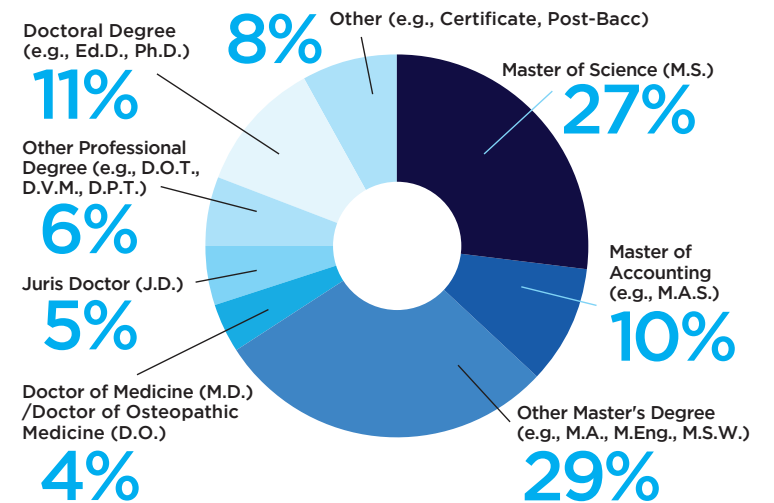
Enrolled more than 25 graduates

Agricultural, Biological, & Chemical Engineering
Architecture & Landscape Architecture
Data Science & Informatics
Human Resources & Labor Relations
Mathematics & Statistics
Nursing
Physical Sciences
Visual & Performing Arts

Enrolled more than 10 graduates

Animal Sciences
Communication & Journalism
Community & Public Health
Environment & Natural Resources
Finance
Health Administration
Liberal Arts & Sciences /Humanities

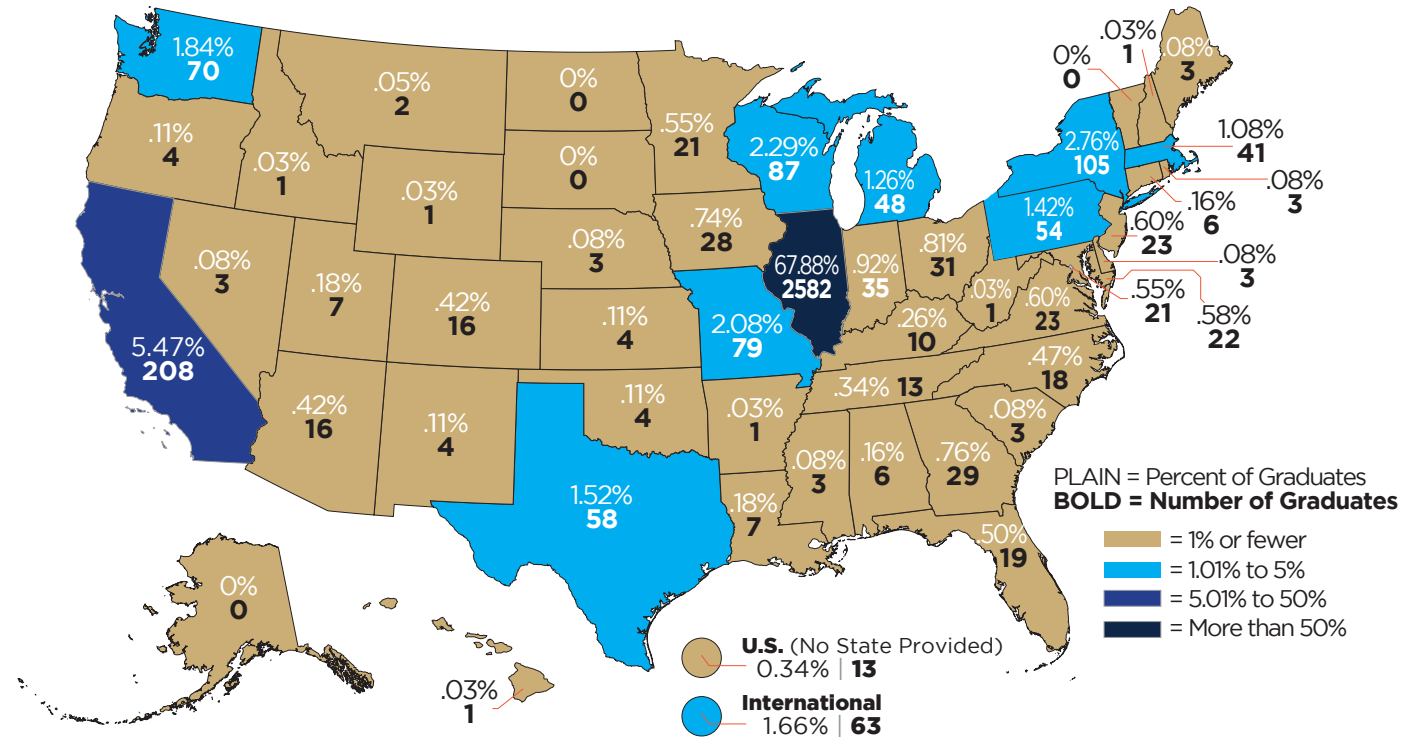
DEGREES SOUGHT



1,515 Respondents

Geographic Locations

As shared by 3,805 graduates, the majority of our 2019-2020 class (68%) chose a first destination within the state of Illinois, with an additional 20% selecting other U.S. destinations. Some of the most common U.S. destinations outside Illinois included states such as California, Missouri, New York, Texas, Washington, and Wisconsin. An additional 2% of graduates indicated a variety of international locations across the world, including Canada, China, France, Indonesia, Japan, The Netherlands, Pakistan, Singapore, South Korea, and the United Kingdom.



Experiential Learning

Experiential learning activities connect classroom knowledge to the world in which students live and work. These experiences help students explore career and personal interests, develop transferable skills, expand networks and references, and strengthen their portfolios as they prepare to transition beyond their bachelor's degrees. Here is a snapshot of how they gained experience, as shared by 2,605 graduates. Note that graduates could report multiple experiential learning activity types.

| Experiential Learning Activity | Number of Respondents | Percentage of Respondents |
|-------------------------------------|-----------------------|---------------------------|
| Internships | 1,912 | 73% |
| Undergraduate research projects | 859 | 33% |
| Study abroad | 688 | 26% |
| Service learning/volunteering | 533 | 20% |
| Assistantships | 428 | 16% |
| Field experiences/practicums | 335 | 13% |
| Student teaching | 201 | 8% |
| Clinical experiences | 189 | 7% |
| Co-ops | 127 | 5% |
| I did not complete any of the above | 185 | 7% |
| I'd rather not answer | 24 | 1% |

92%

of graduates reported participating in experiential learning

35%

of graduates who participated in experiential learning activities received a full-time job offer as a result

THE COLLEGES & SCHOOLS



College of Agricultural, Consumer and Environmental Sciences



GRADUATE STORIES

Oakely Whalen

Agricultural Leadership, Education, and Communications, May 2020

“ I loved the Organizational and Community Leadership concentration within our major. It focuses on learning about yourself and others. The classes teach you how to accelerate your soft skills so you can work with people with a variety of skills sets and in different environments. In one class, we conducted a needs assessment for a local business. The experience has translated into lifelong skills, such as data collection, analysis and making recommendations for improvements. ”

SELECT EMPLOYERS

| | | | |
|------------------------------|----------------------------|------------------------|------------------------------------|
| Abbott | Capital One | GDM Seeds | Morningstar |
| Advanced Agrilytics | Cardno | General Mills | Northrup Grumman |
| AgReliant Genetics | Cargill | Granular | PepsiCo |
| Amazon | Caterpillar | GROWMARK/FS | Prinova |
| Aon | CGB Enterprises | Illinois Farm Bureau | Raytheon Technologies |
| Archer Daniels Midland (ADM) | Charles River Laboratories | John Deere | The Kraft Heinz Company |
| Bank of America | Children's Home & Aid | JPMorgan Chase | The Place for Children with Autism |
| Beck's Hybrids | Clark Construction | KPMG | The Scouler Company |
| BMO Harris Bank | Consolidated Grain & Barge | McAdam Financial | W.W. Grainger |
| Busey Wealth Management | Corteva Agriscience | Mondelez International | Wyffels Hybrids |

SELECT GRADUATE AND PROFESSIONAL SCHOOLS

| | | | |
|---------------------------------|--|---|---|
| Boston University | Midwestern University | State University of New York at Buffalo | University of Maryland, College Park |
| Case Western Reserve University | New York Law School | The Ohio State University | University of Michigan |
| Clark University | New York University | Triton College | University of Minnesota-Twin Cities |
| Cornell University | Northwestern University | Tufts University | University of Missouri-Columbia |
| Erikson Institute | Oklahoma State University | University College Dublin | University of North Carolina at Chapel Hill |
| Florida State University | Purdue University | University of California, Berkeley | University of Pennsylvania |
| Georgetown University | Rosalind Franklin University of Medicine and Science | University of Chicago | University of Wisconsin-Madison |
| Illinois State University | Rush University | University of Illinois Chicago | Washington University in St. Louis |
| Iowa State University | Rutgers University-New Brunswick | University of Illinois Springfield | |
| Kansas State University | St. George's University | University of Illinois Urbana-Champaign | |
| Loyola University Chicago | | | |

2019-2020 GRADUATE OUTCOMES

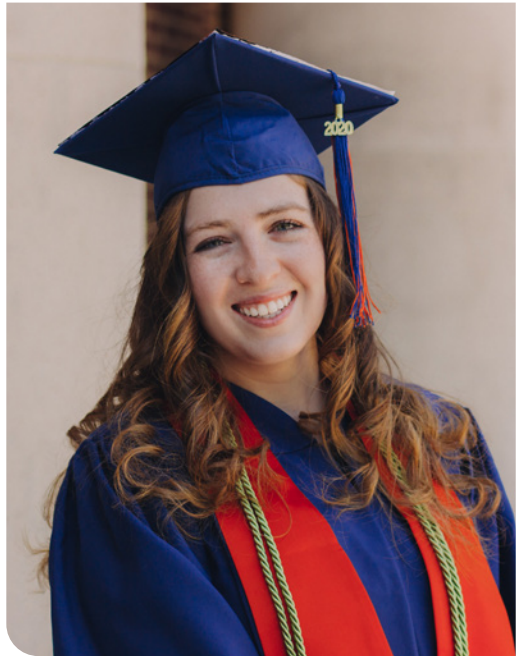
| MAJOR | Number of Graduates | Number Responded | Response Rate | Secured First Destination | Employed | Continuing Education | Volunteer/Service | Seeking | Other |
|---|---------------------|------------------|---------------|---------------------------|------------|----------------------|-------------------|------------|-----------|
| Agricultural & Consumer Economics | 203 | 138 | 68% | 85% | 59% | 26% | 0% | 14% | 1% |
| Agricultural Leadership & Science Education | 31 | 26 | 84% | 92% | 69% | 23% | 0% | 8% | 0% |
| Animal Sciences | 122 | 87 | 71% | 79% | 17% | 62% | 0% | 21% | 0% |
| Crop Sciences & Horticulture | 37 | 28 | 76% | 82% | 50% | 32% | 0% | 14% | 4% |
| Food Science & Human Nutrition | 99 | 73 | 74% | 90% | 24% | 66% | 0% | 7% | 3% |
| Human Development & Family Studies | 73 | 56 | 77% | 88% | 25% | 63% | 0% | 12% | 0% |
| Natural Resources & Environmental Sciences | 67 | 47 | 70% | 67% | 35% | 30% | 2% | 33% | 0% |
| Technical Systems Management | 68 | 48 | 71% | 90% | 69% | 21% | 0% | 10% | 0% |
| All ACES | 697 | 500 | 72% | 84% | 42% | 42% | <1% | 15% | 1% |

ANNUAL SALARY OF FULL-TIME EMPLOYED GRADUATES

| MAJOR | Employed Graduates | Graduates Reporting Salary | Average Salary | 25th Percentile | 50th Percentile | 75th Percentile | Graduates Reporting Signing Bonus | Median Signing Bonus |
|---|--------------------|----------------------------|-----------------|-----------------|-----------------|-----------------|-----------------------------------|----------------------|
| Agricultural & Consumer Economics | 79 | 53 | \$54,090 | \$50,000 | \$55,000 | \$60,000 | 14 | \$3,000 |
| Agricultural Leadership & Science Education | 17 | 10 | \$51,970 | \$45,000 | \$55,000 | \$55,000 | — | — |
| Animal Sciences | 14 | 5 | \$34,400 | \$30,000 | \$30,500 | \$32,000 | — | — |
| Crop Sciences & Horticulture | 14 | 10 | \$54,889 | \$50,000 | \$58,000 | \$64,000 | — | — |
| Food Science & Human Nutrition | 18 | 10 | \$59,680 | \$47,800 | \$62,500 | \$70,000 | — | — |
| Human Development & Family Studies* | 33 | 12 | \$38,785 | \$31,210 | \$40,000 | \$45,500 | — | — |
| Natural Resources & Environmental Sciences | 14 | 8 | \$37,750 | \$33,000 | \$35,000 | \$42,750 | — | — |
| Technical Systems Management | 31 | 19 | \$61,871 | \$55,000 | \$62,000 | \$66,560 | 6 | \$3,000 |
| All ACES | 201 | 118 | \$53,571 | \$46,000 | \$55,000 | \$60,000 | 26 | \$3,000 |

* See note on salary tables on page 29 of the Methods section.

College of Applied Health Sciences



GRADUATE STORIES

Mikayla Pollard

Speech & Hearing Science, May 2020

“ I [majored] Speech and Hearing Science with a concentration in Speech Pathology, along with a minor in Psychology. I knew both areas would provide the opportunity to work with diverse populations with unique needs, and to make a positive impact on clients' lives. But, I still wasn't sure exactly which path I wanted to take... To help guide me, I became actively engaged in several internship and leadership opportunities on campus where I worked on multidisciplinary teams and was exposed to the roles that a variety of professions play in the advocacy arena, which led me down the path I am taking today. ”

SELECT EMPLOYERS

| | | | |
|--|--|--|---|
| Arkham Elite Marketing Avia Bickford of Oswego Biolife Plasma Services Blue Cross and Blue Shield Boston Medical Center Bright Cellars Busey Bank BY YOUR SIDE- Autism Therapy Services | Carle Foundation Hospital Cerner Corporation Chestnut Mountain Resort Chicago Fire FC Christie Clinic Clark-Lindsey Village Claro Healthcare CVS Health DuPage County Health Department | DuPage Medical Group EPSi.io Hatha Yoga & Fitness Manhattan Park District Marsh & McLennan Medline Industries MedOp Solutions Midwest Express Clinic Nordic Consulting Northwell Health | Northwestern Memorial Hospital Northwestern University Oak Street Health Stephens Family YMCA Twitch University of Chicago University of Illinois Urbana-Champaign, Division of Intercollegiate Athletics VIPKid |
|--|--|--|---|

SELECT GRADUATE AND PROFESSIONAL SCHOOLS

| | | | |
|---|--|--|--|
| Baylor University Cornell University DePaul University Eastern Illinois University Elmhurst University Georgetown University Georgia Southern University Goldfarb School of Nursing Governors State University Illinois State University Indiana University Bloomington Johns Hopkins University | Lake Erie College of Osteopathic Medicine Loyola University Chicago Marquette University Midwestern University Northern Illinois University Northwestern University, Feinberg School of Medicine Pennsylvania State University Purdue University Rosalind Franklin University of Medicine and Science | Rush University, Medical Center Saint Louis University, School of Medicine Saint Xavier University Southern Illinois University, School of Medicine St. Louis College of Pharmacy Texas A&M University The Chicago School of Professional Psychology Tufts University Tulane University | University of Chicago University of Cincinnati University of Illinois Chicago University of Kentucky University of Memphis University of Michigan University of Minnesota-Twin Cities University of Texas at Austin University of Washington-Seattle University of Wisconsin-Madison Washington University in St. Louis, School of Medicine |
|---|--|--|--|

2019-2020 GRADUATE OUTCOMES

| MAJOR | Number of Graduates | Number Responded | Response Rate | Secured First Destination | Employed | Continuing Education | Volunteer/Service | Seeking | Other |
|-----------------------------------|---------------------|------------------|---------------|---------------------------|----------|----------------------|-------------------|---------|-------|
| Community Health | 183 | 105 | 57% | 90% | 30% | 59% | 1% | 10% | 0% |
| Interdisciplinary Health Sciences | 103 | 68 | 66% | 87% | 21% | 66% | 0% | 13% | 0% |
| Kinesiology | 179 | 111 | 62% | 88% | 16% | 71% | 1% | 11% | 1% |
| Recreation, Sport & Tourism | 99 | 49 | 49% | 86% | 35% | 51% | 0% | 14% | 0% |
| Speech & Hearing Science | 80 | 70 | 88% | 97% | 9% | 88% | 0% | 3% | 0% |
| All Applied Health Sciences | 644 | 403 | 63% | 90% | 21% | 68% | 1% | 10% | <1% |

ANNUAL SALARY OF FULL-TIME EMPLOYED GRADUATES

| MAJOR | Employed Graduates | Graduates Reporting Salary | Average Salary | 25th Percentile | 50th Percentile | 75th Percentile | Graduates Reporting Signing Bonus | Median Signing Bonus |
|-----------------------------------|--------------------|----------------------------|----------------|-----------------|-----------------|-----------------|-----------------------------------|----------------------|
| Community Health | 28 | 17 | \$59,280 | \$50,000 | \$65,000 | \$68,000 | 5 | \$5,000 |
| Interdisciplinary Health Sciences | 13 | 7 | \$41,429 | \$30,000 | \$38,000 | \$55,000 | — | — |
| Kinesiology* | 47 | 11 | \$35,636 | \$31,000 | \$35,000 | \$41,000 | — | — |
| Recreation, Sport & Tourism | 16 | 8 | \$42,000 | \$35,000 | \$44,000 | \$45,000 | — | — |
| Speech & Hearing Science* | — | — | — | — | — | — | — | — |
| All Applied Health Sciences | 76 | 36 | \$47,034 | \$35,000 | \$48,000 | \$60,000 | 7 | \$5,000 |

* See note on salary tables on page 29 of the Methods section.



GRADUATE STORIES

Yera Shin

Middle Grades Education, May 2020

“ I am in my first year as a World Language Teacher at Newark Public Schools in New Jersey. I am the first Spanish teacher here in over 10 years. There is a lot of curriculum development to do. It has been particularly interesting to rebuild this role as a first-year teacher in the midst of a pandemic. But, Illinois taught me how to do this, Teach for America provides great resources, and the staff at my school supports me well. ”

SELECT EMPLOYERS

- | | | | |
|---|--|----------------------------------|-------------------------------------|
| Academy for Global Citizenship | Field Park Elementary School | Lee R. Foster Elementary School | Prairiewood Elementary School |
| Alfred Nobel Elementary School | Gemini Middle School | Liberty Elementary School | Seattle Country Day School |
| Amos Alonzo Stagg High School | Glenside Middle School | Lycée Anna de Noailles | South Loop Montessori School |
| Anne Fox Elementary School | Granger Middle School | Maddock Elementary School | Spencer Loomis Elementary School |
| Bottenfield Elementary School | Havenwood Nature School | Mannheim Middle School | St. Jerome's Catholic School |
| Bronzeville Classical Elementary School | Hawthorn School for Young Learners | Meadowbrook Elementary School | Stratton Academy of the Arts |
| Central Elementary School | Highcrest Middle School | Minooka Intermediate School | Sullivan High School |
| Chatham Elementary School | Hillcrest Elementary School | Next Generation School | Thomas Middle School |
| Chauncey H. Duker School | Horizon Science Academy Southwest Chicago | Northlawn Junior High School | Thomas Paine Elementary School |
| Chicago Academy High School | Hunting Ridge Elementary School | Northwest Middle School | Thomasboro Grade School |
| Covington Elementary School | Indian Grove Elementary School | Oak Lawn-Hometown Middle School | Urbana School District 116 |
| Crete-Monee High School | International Prep Academy | Oak Park Building Blocks | Westbrook School for Young Learners |
| Deer Path Middle School | Jackson Elementary School | Old Quarry Middle School | Willows Academy |
| Dever Elementary School | Jefferson Middle School | Palos West Elementary School | Winston Churchill School |
| Disney II Magnet High School | John Laidlaw Elementary School | Passow Elementary School | Woodlawn Middle School |
| East Prairie Middle School | Kipling Elementary School | Pleasant Acres Elementary School | Yavneh Day School |
| Edgewood Middle School | KIPP Camino Academy | | |
| Elmer H. Franzen Intermediate School | La Grange Area Department of Special Education | | |

SELECT GRADUATE AND PROFESSIONAL SCHOOLS

- | | | | |
|---------------------------|---|----------------------------|--------------------|
| DePaul University | University of Illinois Chicago | University of Notre Dame | University of Utah |
| San Jose State University | University of Illinois Urbana-Champaign | University of Pennsylvania | |

2019-2020 GRADUATE OUTCOMES

| MAJOR | Number of Graduates | Number Responded | Response Rate | Secured First Destination | Employed | Continuing Education | Volunteer/Service | Seeking | Other |
|--|---------------------|------------------|---------------|---------------------------|----------|----------------------|-------------------|---------|-------|
| Early Childhood and Elementary Education | 81 | 73 | 90% | 96% | 89% | 7% | 0% | 4% | 0% |
| Learning and Education Studies | 13 | 9 | 69% | 89% | 11% | 78% | 0% | 11% | 0% |
| Middle Grades Education | 24 | 23 | 96% | 100% | 100% | 0% | 0% | 0% | 0% |
| Special Education | 26 | 25 | 96% | 100% | 100% | 0% | 0% | 0% | 0% |
| All Education | 144 | 130 | 90% | 97% | 88% | 9% | 0% | 3% | 0% |

ANNUAL SALARY OF FULL-TIME EMPLOYED GRADUATES

| MAJOR | Employed Graduates | Graduates Reporting Salary | Average Salary | 25th Percentile | 50th Percentile | 75th Percentile |
|--|--------------------|----------------------------|----------------|-----------------|-----------------|-----------------|
| Early Childhood and Elementary Education | 65 | 15 | \$45,729 | \$40,000 | \$44,500 | \$50,000 |
| Learning and Education Studies* | — | — | — | — | — | — |
| Middle Grades Education* | 22 | 9 | \$47,186 | \$41,000 | \$45,500 | \$50,174 |
| Special Education | 25 | 8 | \$47,267 | \$42,500 | \$44,500 | \$52,817 |
| All Education | 113 | 33 | \$45,934 | \$41,000 | \$44,500 | \$50,174 |

* See note on salary tables on page 29 of the Methods section.

College of Fine + Applied Arts



GRADUATE STORIES

Hayley Peterson

Graphic Design, May 2020

“Design has been such a unique fit for me because I have always had a problem-solving mind... I see design as the intersection of art and problem solving... and I found myself so intrigued by the research my art and design professors were doing in their field, whether it was art history, data visualization, or design thinking. We are so fortunate at Illinois to have direct access to experts who are engaged in research and continuing to learn along with us.”

SELECT EMPLOYERS

- | | | | |
|--|---|--|--|
| 97 Switch Abbott Laboratories Amelia Carriel Junior High School Ameren Bailey Edward Baltimore Center Stage Brook Park Holdings Brunswick Corporation Bryan Middle School Butler Junior High School Chicago Tech Academy High School Concordia Wireless | Cordogan Clark & Associates creative werks Cushman & Wakefield Deaconess Hospital Deerfield Public School District 109 DLZ Corporation Festival 56 Hitchcock Design Group Hoffman Estates High School INSPIRE Entertainment Kane County Division of Transportation | Kimley-Horn Larkin High School Lionakis Madden Media MasTec Network Solutions MyTyde Nelson Liaw Architects Next Generation School NIO Northrop Grumman Northside College Prep Pioneer Realty Group | River Trail School Salt Fork High School Schaumburg Community Consolidated School District 54 Schneider Electric Southwest Conservation Corps Steel City Academy SUAVV Magazine Velocity Dance Center Wayland Union High School William Howard Taft High School XL Construction |
|--|---|--|--|

SELECT GRADUATE AND PROFESSIONAL SCHOOLS

- | | | | |
|---|--|---|--|
| Arizona State University Boston Conservatory at Berklee Bristol Old Vic Theatre School California College of the Arts Cardiff University Carnegie Mellon University College for Creative Studies-Taubman Center Cornell University | DePaul University Eastern Illinois University Eastman School of Music Florida International University Georgia Institute of Technology Harvard University, Graduate School of Design Louisiana State University McGill University Naropa University | New York University Rush University University of Cambridge University of Cincinnati University of Colorado Boulder University of Florida University of Kansas University of Michigan University of Minnesota -Twin Cities | University of Pennsylvania University of Southern California University of Toronto University of Washington -Seattle University of Wisconsin -Milwaukee Washington University |
|---|--|---|--|

2019-2020 GRADUATE OUTCOMES

| MAJOR | Number of Graduates | Number Responded | Response Rate | Secured First Destination | Employed | Continuing Education | Volunteer/Service | Seeking | Other |
|--|---------------------|------------------|---------------|---------------------------|----------|----------------------|-------------------|---------|-------|
| Architecture | 91 | 50 | 55% | 90% | 22% | 68% | 0% | 10% | 0% |
| Art & Design | 158 | 42 | 27% | 86% | 64% | 22% | 0% | 14% | 0% |
| Dance, Music, & Theatre | 121 | 69 | 57% | 96% | 47% | 49% | 0% | 4% | 0% |
| Landscape Architecture & Urban & Regional Planning | 41 | 21 | 51% | 86% | 43% | 43% | 0% | 14% | 0% |
| All Fine + Applied Arts | 400 | 176 | 44% | 90% | 43% | 47% | 0% | 10% | 0% |

ANNUAL SALARY OF FULL-TIME EMPLOYED GRADUATES

| MAJOR | Employed Graduates | Graduates Reporting Salary | Average Salary | 25th Percentile | 50th Percentile | 75th Percentile |
|---|--------------------|----------------------------|----------------|-----------------|-----------------|-----------------|
| Architecture* | 23 | 9 | \$52,444 | \$50,000 | \$52,000 | \$60,000 |
| Art & Design | 27 | 8 | \$45,875 | \$41,500 | \$47,000 | \$50,000 |
| Dance, Music, & Theatre | 23 | 9 | \$52,809 | \$42,000 | \$44,279 | \$45,000 |
| Landscape Architecture & Urban & Regional Planning* | 30 | 15 | \$50,996 | \$46,250 | \$50,000 | \$57,000 |
| All Fine + Applied Arts | 66 | 26 | \$46,731 | \$42,000 | \$45,000 | \$50,000 |

* See note on salary tables on page 29 of the Methods section.



GRADUATE STORIES

Jose Del Real

Information Systems, May 2020

“ I became involved in organizations like the Association for Latino Professionals for America and Illinois Business Consulting that provided hands-on experiences. These opportunities helped me know how I wanted to apply my Information Systems knowledge. We worked with teams from diverse backgrounds – both ethnic backgrounds and academic backgrounds. I learned that I thrived in the space between the business students and the engineering students. I was technical enough to understand what the engineers were saying, and I could translate it in ways for the business students to understand and apply. That’s my comfort zone. I am the glue between these groups. ”

SELECT EMPLOYERS

| | | | |
|----------------------------|------------------------|----------------------------|------------------------------|
| AbbVie | Chicago White Sox | IBM | Plante Moran |
| Accenture | CIBC | JPMorgan Chase | PricewaterhouseCoopers (PwC) |
| ALDI | Citigroup | Kohl's | Protiviti |
| Alight Solutions | Coyote Logistics | KPMG | Rödl & Partner |
| Allstate Insurance Company | Crowe Horwath | Lincoln International | RSM |
| Amazon | Deloitte | Madison Industries | Salesforce |
| Bain & Company | Echo Global Logistics | McDonald's | Sandia National Laboratories |
| Baird | Eight Eleven Group | Medline Industries | Shell |
| Baker Tilly Virchow Krause | Eli Lilly & Co. | Microsoft | Teach for America |
| Bank of America | EY | Miller Cooper | The Kraft Heinz Company |
| Baxter International | FTI Consulting | Moelis & Company | The Walt Disney Company |
| BDO USA | Galt & Company | Morningstar | True Partners Consulting |
| BMO Harris Bank | Grant Thornton | Motorola Solutions | US Foods |
| Boeing | HBR Consulting | Nielsen | Visa |
| Busey Bank | HealthScape Advisors | Northern Trust Corporation | W.W. Grainger |
| Cappgemini | Houlihan Lokey | Northwestern Mutual | William Blair |
| Caterpillar | Huron Consulting Group | PepsiCo | Zurich North America |

SELECT GRADUATE AND PROFESSIONAL SCHOOLS

| | | | |
|---------------------|---------------------------------------|---|-----------------------------------|
| Columbia University | George Washington University | University of Illinois Urbana-Champaign | University of Notre Dame |
| Cornell University | University of California, Los Angeles | University of North Carolina at Chapel Hill | University of Pennsylvania |
| DePaul University | University of Chicago | | University of Southern California |
| Duke University | | | Yale University |

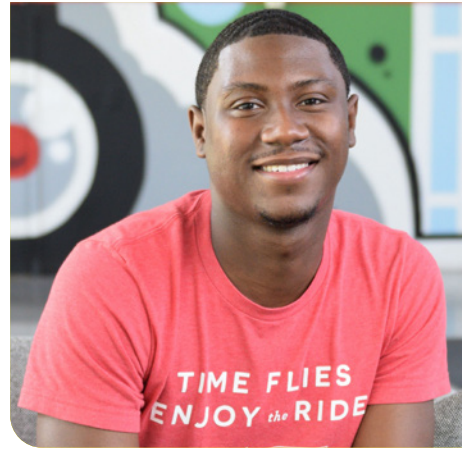
2019-2020 GRADUATE OUTCOMES

| MAJOR | Number of Graduates | Number Responded | Response Rate | Secured First Destination | Employed | Continuing Education | Volunteer/Service | Seeking | Other |
|-------------------------|---------------------|------------------|---------------|---------------------------|----------|----------------------|-------------------|---------|-------|
| Accountancy | 374 | 337 | 90% | 99% | 47% | 52% | 0% | 1% | 0% |
| Finance | 256 | 218 | 85% | 99% | 84% | 15% | 0% | 1% | 0% |
| Information Systems | 161 | 132 | 82% | 96% | 81% | 15% | 0% | 4% | 0% |
| Management | 61 | 49 | 80% | 94% | 69% | 25% | 0% | 6% | 0% |
| Marketing | 126 | 104 | 83% | 94% | 84% | 10% | 0% | 6% | 0% |
| Operations Management | 20 | 16 | 80% | 88% | 82% | 6% | 0% | 12% | 0% |
| Supply Chain Management | 54 | 45 | 83% | 96% | 96% | 0% | 0% | 4% | 0% |
| All Gies Business | 782 | 667 | 85% | 97% | 66% | 31% | 0% | 3% | 0% |

ANNUAL SALARY OF FULL-TIME EMPLOYED GRADUATES

| MAJOR | Employed Graduates | Graduates Reporting Salary | Average Salary | 25th Percentile | 50th Percentile | 75th Percentile | Graduates Reporting Signing Bonus | Median Signing Bonus |
|-------------------------|--------------------|----------------------------|----------------|-----------------|-----------------|-----------------|-----------------------------------|----------------------|
| Accountancy | 155 | 93 | \$68,629 | \$62,000 | \$67,750 | \$75,000 | 62 | \$5,000 |
| Finance | 181 | 119 | \$70,009 | \$63,000 | \$70,000 | \$79,500 | 86 | \$5,000 |
| Information Systems | 107 | 74 | \$69,065 | \$63,000 | \$70,000 | \$75,000 | 51 | \$5,000 |
| Management | 34 | 18 | \$61,361 | \$55,000 | \$60,000 | \$69,000 | 8 | \$5,500 |
| Marketing | 87 | 57 | \$61,264 | \$53,000 | \$63,000 | \$69,000 | 32 | \$5,000 |
| Operations Management | 13 | 9 | \$70,250 | \$67,000 | \$69,500 | \$76,000 | 6 | \$5,000 |
| Supply Chain Management | 42 | 31 | \$67,196 | \$63,500 | \$67,250 | \$71,000 | 22 | \$5,000 |
| All Gies Business | 436 | 271 | \$67,028 | \$60,000 | \$66,000 | \$73,000 | 176 | \$5,000 |

Grainger College of Engineering



GRADUATE STORIES

Akeem Kennedy

Electrical Engineering, December 2019

“The support that I found [in Grainger Engineering] is what made the difference at Illinois. I never once felt as though I couldn't do it. It was because I had the support system of Dean Favila, the Morrill Engineering Program, the National Society of Black Engineers (NSBE), and the teachers. I found being in a classroom with 40 people or 400 people, you can still have that close relationship with your professors.”

2019-2020 GRADUATE OUTCOMES

| MAJOR | Number of Graduates | Number Responded | Response Rate | Secured First Destination | Employed | Continuing Education | Volunteer/Service | Seeking | Other |
|---|---------------------|------------------|---------------|---------------------------|----------|----------------------|-------------------|---------|-------|
| Aerospace Engineering | 94 | 54 | 57% | 96% | 44% | 52% | 0% | 4% | 0% |
| Agricultural & Biological Engineering | 38 | 18 | 47% | 89% | 50% | 39% | 0% | 11% | 0% |
| Bioengineering | 54 | 31 | 57% | 97% | 39% | 58% | 0% | 3% | 0% |
| Civil Engineering | 178 | 117 | 66% | 99% | 50% | 49% | 0% | 0% | 1% |
| Computer Engineering | 340 | 228 | 67% | 93% | 62% | 31% | 0% | 6% | 1% |
| Computer Science | 258 | 126 | 49% | 98% | 76% | 22% | 0% | 2% | 0% |
| Electrical Engineering | 203 | 130 | 64% | 92% | 50% | 42% | 0% | 7% | 1% |
| Industrial Engineering | 68 | 32 | 47% | 97% | 78% | 19% | 0% | 3% | 0% |
| Materials Science and Engineering | 87 | 49 | 56% | 96% | 35% | 61% | 0% | 4% | 0% |
| Mechanical Science & Engineering† | 200 | 127 | 64% | 94% | 62% | 32% | 0% | 6% | 0% |
| Nuclear, Plasma, & Radiological Engineering | 30 | 15 | 50% | 93% | 33% | 60% | 0% | 7% | 0% |
| Physics‡ | 145 | 77 | 53% | 84% | 35% | 49% | 0% | 16% | 0% |
| Systems Engineering & Design | 61 | 32 | 52% | 97% | 66% | 31% | 0% | 3% | 0% |
| All Grainger Engineering | 1,674 | 992 | 59% | 95% | 57% | 38% | 0% | 5% | <1% |

* See note on salary tables on page 29 of the Methods section.

† See Colleges and Majors tables at the end of the methods section for notes on these majors.

SELECT EMPLOYERS

| | | | |
|-----------------------------|--------------------|-----------------------|------------------------------|
| Accenture | Epic Systems | IMC Financial Markets | Optiver |
| AECOM | Exelon | Intel | Oracle |
| Amazon | Facebook | John Deere | Procter & Gamble |
| Apple | Ford Motor Company | JPMorgan Chase | Protiviti |
| Argonne National Laboratory | GE Aviation | Kiewit | Sandia National Laboratories |
| Burns & McDonnell | General Motors | Kimley-Horn | SpaceX |
| Capital One | Goldman Sachs | Microsoft | Texas Instruments |
| Caterpillar | Google | Motorola Solutions | Turner Construction Company |
| Collins Aerospace | Groupon | Northrop Grumman | West Monroe Partners |
| Deloitte | IBM | Nvidia | Wolverine Trading |

SELECT GRADUATE AND PROFESSIONAL SCHOOLS

| | | | |
|------------------------------------|---------------------------------------|------------------------------------|---|
| California Institute of Technology | Georgia Institute of Technology | Princeton University | University of California, Los Angeles |
| Carnegie Mellon University | Massachusetts Institute of Technology | Stanford University | University of California, San Diego |
| Columbia University | Northwestern University | Texas A&M University | University of Illinois Urbana-Champaign |
| Cornell University | | University of California, Berkeley | |

ANNUAL SALARY OF FULL-TIME EMPLOYED GRADUATES

| MAJOR | Employed Graduates | Graduates Reporting Salary | Average Salary | 25th Percentile | 50th Percentile | 75th Percentile | Graduates Reporting Signing Bonus | Median Signing Bonus |
|--|--------------------|----------------------------|----------------|-----------------|-----------------|-----------------|-----------------------------------|----------------------|
| Aerospace Engineering | 22 | 17 | \$70,697 | \$66,500 | \$73,000 | \$79,000 | 9 | \$5,000 |
| Agricultural & Biological Engineering* | 27 | 19 | \$65,519 | \$56,000 | \$65,000 | \$72,500 | -- | -- |
| Bioengineering | 12 | 9 | \$62,411 | \$62,000 | \$65,000 | \$71,000 | 5 | \$5,000 |
| Civil Engineering | 58 | 45 | \$65,035 | \$62,000 | \$65,000 | \$67,600 | 22 | \$2,500 |
| Computer Engineering | 138 | 113 | \$99,145 | \$80,000 | \$100,000 | \$112,000 | 89 | \$15,000 |
| Computer Science | 94 | 69 | \$110,978 | \$93,000 | \$112,000 | \$126,000 | 58 | \$15,000 |
| Electrical Engineering | 65 | 52 | \$76,129 | \$71,000 | \$76,000 | \$82,000 | 37 | \$5,000 |
| Industrial Engineering | 25 | 19 | \$73,347 | \$65,000 | \$72,000 | \$78,000 | 7 | \$6,000 |
| Materials Science and Engineering | 15 | 12 | \$77,272 | \$72,130 | \$74,000 | \$81,500 | 5 | \$8,000 |
| Mechanical Science & Engineering† | 78 | 56 | \$74,286 | \$71,000 | \$74,500 | \$78,000 | 28 | \$5,000 |
| Nuclear, Plasma, & Radiological Engineering* | 19 | 18 | \$69,000 | \$65,750 | \$71,000 | \$72,000 | -- | -- |
| Physics‡ | 24 | 15 | \$80,167 | \$55,000 | \$77,000 | \$100,000 | 8 | \$10,000 |
| Systems Engineering & Design† | 20 | 13 | \$79,531 | \$70,000 | \$79,000 | \$81,000 | 7 | \$6,500 |
| All Grainger Engineering | 553 | 424 | \$86,149 | \$70,000 | \$79,000 | \$100,000 | 273 | \$8,000 |

College of Liberal Arts & Sciences



GRADUATE STORIES

Brian McFarlin

Psychology, May 2020

“When I arrived at Illinois in 2016, I was unsure of the specific area in Psychology that I wanted to pursue. Thankfully, the guidance I received from my advisors and professors taught me to be comfortable with the uncertainty of taking on new experiences. This led me to get involved in student organizations, work in research labs, take a diversity of courses, apply for campus jobs, and more until I was able to find what interested me the most. The breadth of experience available at Illinois and within Psychology made all the difference in finding the right career path for me.”

2019-2020 GRADUATE OUTCOMES

| DISCIPLINES & MAJORS [†] | Number of Graduates | Number Responded | Response Rate | Secured First Destination | Employed | Continuing Education | Volunteer/Service | Seeking | Other |
|--|---------------------|------------------|---------------|---------------------------|----------|----------------------|-------------------|---------|-------|
| Astronomy & Physics | 193 | 102 | 53% | 82% | 37% | 45% | 0% | 17% | 1% |
| Biological Sciences | 478 | 251 | 53% | 88% | 25% | 63% | <1% | 12% | 0% |
| Chemical Engineering & Chemistry | 323 | 180 | 56% | 93% | 47% | 46% | 0% | 7% | 0% |
| Communication | 278 | 119 | 43% | 89% | 50% | 38% | 1% | 10% | 1% |
| Earth, Society, & Environment | 108 | 51 | 47% | 86% | 37% | 49% | 0% | 12% | 2% |
| Economics | 493 | 191 | 39% | 88% | 52% | 36% | <1% | 12% | 0% |
| English & Creative Writing | 161 | 78 | 48% | 90% | 54% | 35% | 1% | 10% | 0% |
| History & Philosophy | 123 | 59 | 48% | 86% | 44% | 42% | 0% | 14% | 0% |
| Literatures, Cultures, & Linguistics | 146 | 86 | 59% | 88% | 49% | 39% | 0% | 12% | 0% |
| Mathematics & Statistics | 696 | 290 | 42% | 90% | 44% | 46% | 0% | 9% | 1% |
| Political Science, Global Studies, & Area Studies | 309 | 146 | 47% | 91% | 36% | 53% | 2% | 8% | 1% |
| Psychology | 542 | 286 | 53% | 90% | 30% | 59% | 1% | 10% | 0% |
| Sociology, Anthropology Interdisciplinary Cultural Studies | 133 | 54 | 41% | 91% | 37% | 52% | 2% | 9% | 0% |
| All Liberal Arts & Sciences | 3,412 | 1,619 | 47% | 90% | 41% | 48% | <1% | 10% | <1% |

[†]See Colleges and Majors tables at the end of the methods section for notes on these majors.

SELECT EMPLOYERS

| | | | |
|-----------------------------|-----------------------------|-------------------------------------|----------------------------|
| AbbVie | C3.ai | KPMG | ScribeAmerica |
| Accenture | Deloitte | Medix | Sensient Technologies |
| Alight Solutions | Discover Financial Services | Microsoft | State Farm Insurance |
| Amazon | Epic Systems | National Institutes of Health (NIH) | Synchrony Financial |
| AmeriCorps | Facebook | Northwestern Memorial Hospital | Teach for America |
| Anheuser-Busch InBev | Google | PepsiCo | Tempus Labs |
| Apple | IBM | PricewaterhouseCoopers (PwC) | U.S. Department of Justice |
| Argonne National Laboratory | JPMorgan Chase | Procter & Gamble | Yelp |

SELECT GRADUATE AND PROFESSIONAL SCHOOLS

| | | | |
|------------------------------------|---------------------------------------|---------------------------------------|----------------------------------|
| California Institute of Technology | Johns Hopkins University | Stanford University | University of Oxford |
| Carnegie Mellon University | Loyola University Chicago | University of California, Berkeley | University of Pennsylvania |
| Columbia University | Massachusetts Institute of Technology | University of California, Los Angeles | University of Texas at Austin |
| Cornell University | New York University | University of Chicago | University of Washington-Seattle |
| DePaul University | Northwestern University | University of Colorado Boulder | University of Wisconsin-Madison |
| Duke University | | University of Illinois Chicago | Washington University |

ANNUAL SALARY OF FULL-TIME EMPLOYED GRADUATES

| DISCIPLINES & MAJORS [†] | Employed Graduates | Graduates Reporting Salary | Average Salary | 25th Percentile | 50th Percentile | 75th Percentile | Graduates Reporting Signing Bonus | Median Signing Bonus |
|--|--------------------|----------------------------|----------------|-----------------|-----------------|-----------------|-----------------------------------|----------------------|
| Astronomy & Physics | 35 | 21 | \$77,150 | \$60,000 | \$70,000 | \$97,500 | 12 | \$10,000 |
| Biological Sciences | 57 | 29 | \$43,580 | \$34,320 | \$40,000 | \$48,000 | 9 | \$5,000 |
| Chemical Engineering & Chemistry | 83 | 61 | \$70,011 | \$65,000 | \$72,000 | \$75,500 | 14 | \$7,700 |
| Communication | 57 | 25 | \$49,095 | \$40,000 | \$50,000 | \$55,000 | 5 | \$5,000 |
| Earth, Society, & Environment | 15 | 13 | \$47,966 | \$41,600 | \$47,000 | \$60,000 | — | — |
| Economics | 97 | 63 | \$62,816 | \$53,000 | \$65,000 | \$72,000 | 30 | \$5,000 |
| English & Creative Writing | 42 | 14 | \$52,536 | \$42,000 | \$49,000 | \$62,500 | — | — |
| History & Philosophy | 23 | 11 | \$49,550 | \$39,000 | \$47,000 | \$60,000 | — | — |
| Literatures, Cultures, & Linguistics | 40 | 22 | \$68,857 | \$49,000 | \$60,000 | \$90,000 | 8 | \$7,500 |
| Mathematics & Statistics | 127 | 72 | \$79,590 | \$63,000 | \$75,000 | \$95,000 | 43 | \$9,500 |
| Political Science, Global Studies, & Area Studies | 49 | 26 | \$42,728 | \$37,000 | \$41,500 | \$50,000 | — | — |
| Psychology | 78 | 45 | \$42,340 | \$35,000 | \$40,000 | \$53,000 | 6 | \$3,625 |
| Sociology, Anthropology Interdisciplinary Cultural Studies | 20 | 10 | \$51,000 | \$33,250 | \$48,250 | \$65,000 | — | — |
| All Liberal Arts & Sciences | 638 | 363 | \$58,057 | \$41,000 | \$57,750 | \$72,000 | 121 | \$5,000 |



GRADUATE STORIES

Rebecca Wood

Journalism, May 2020

“Through a variety of Journalism experiences at Illinois, I came to appreciate that this field is a big responsibility. In many ways, the articles that journalists write are a first draft of history. There are so many important stories that exist. We need to represent more diverse stories and viewpoints that have been present in the past. I am really excited to take this knowledge and to do what I can with it.”

SELECT EMPLOYERS

- @properties
- 360i
- Accenture
- Adobe
- Adtalem Global Education
- Agency 720
- Alight Solutions
- All Points Public Relations
- Amazon
- Automotive Internet Media
- Avenue B2B Marketing Strategy and Activation
- BCV
- Bytedance
- Campus Ink
- Campus Property Management
- Captivate
- Carilion Clinic
- CDM New York
- Club Colors
- Delta Mobile Systems
- DHR International
- Edelman
- Energy BBDO
- Epsilon
- Executive Branch of the United States
- FCB Chicago
- FCB Health Network
- Fishman Public Relations
- Google
- GSD&M
- Gympass
- HERE Arts Center
- Highdive Advertising
- Innovative Influence
- Instapanel
- JB Training Solutions
- Jellyvision
- Logical Position
- LogicGate
- Medasource
- Media Assembly
- Medline Industries
- MERGE
- Mindshare
- Morgan Stanley
- NBC Chicago
- Neuhoff Media Danville
- Nuveen
- Opportunities for All
- Oracle
- Our Esquina Media
- PepsiCo - Frito-Lay
- PMG Digital Marketing Agency
- Post-Bulletin
- Shaker Recruitment Marketing
- Spaulding Ridge
- SSPR
- Starcom
- Stay Ahead Real Estate Marketing
- Stratum Med
- Strike 2
- SurtzMedia
- Target
- The Bradford Group
- The Kraft Heinz Company
- WDTN-TV
- WEEK-TV
- Würzburger Kickers

SELECT GRADUATE AND PROFESSIONAL SCHOOLS

- DePaul University
- Northwestern University
- University of Illinois Chicago
- University of Illinois Springfield
- University of Illinois Urbana-Champaign
- University of Illinois College of Law
- University of Southern California

2019-2020 GRADUATE OUTCOMES

| DEPARTMENT | Number of Graduates | Number Responded | Response Rate | Secured First Destination | Employed | Continuing Education | Volunteer/Service | Seeking | Other |
|------------------------|---------------------|------------------|---------------|---------------------------|----------|----------------------|-------------------|---------|-------|
| Advertising | 245 | 119 | 49% | 76% | 58% | 18% | 0% | 23% | 1% |
| Journalism | 60 | 32 | 53% | 84% | 47% | 37% | 0% | 16% | 0% |
| Media & Cinema Studies | 38 | 12 | 32% | 58% | 33% | 25% | 0% | 42% | 0% |
| All Media | 343 | 163 | 48% | 77% | 54% | 23% | 0% | 23% | <1% |

ANNUAL SALARY OF FULL-TIME EMPLOYED GRADUATES

| DEPARTMENT | Employed Graduates | Graduates Reporting Salary | Average Salary | 25th Percentile | 50th Percentile | 75th Percentile | Graduates Reporting Signing Bonus | Median Signing Bonus |
|-------------------------|--------------------|----------------------------|----------------|-----------------|-----------------|-----------------|-----------------------------------|----------------------|
| Advertising | 67 | 36 | \$48,653 | \$39,000 | \$45,000 | \$56,500 | 8 | \$5,000 |
| Journalism | 15 | 9 | \$41,000 | \$35,000 | \$40,000 | \$44,000 | -- | -- |
| Media & Cinema Studies* | -- | -- | -- | -- | -- | -- | -- | -- |
| All Media | 85 | 45 | \$47,122 | \$38,000 | \$43,000 | \$54,000 | 9 | \$5,000 |

* See note on salary tables on page 29 of the Methods section.

School of Social Work



GRADUATE STORIES

Araceli Carbajal

Social Work, May 2020

“The School of Social Work at Illinois has been a particularly special place for me. It is filled with compassionate individuals that value you as a human being and care for one’s mental health. The professors... showed trust in my ability to continue practicing Social Work and it’s greatly appreciated.”

2019-2020 GRADUATE OUTCOMES

| | Number of Graduates | Number Responded | Response Rate | Secured First Destination | Employed | Continuing Education | Volunteer/Service | Seeking | Other |
|-----------------|---------------------|------------------|---------------|---------------------------|----------|----------------------|-------------------|---------|-------|
| All Social Work | 78 | 58 | 74% | 97% | 7% | 88% | 2% | 3% | 0% |

ANNUAL SALARY OF FULL-TIME EMPLOYED GRADUATES

| | Employed Graduates | Graduates Reporting Salary | Average Salary | 25th Percentile | 50th Percentile | 75th Percentile |
|------------------|--------------------|----------------------------|----------------|-----------------|-----------------|-----------------|
| All Social Work* | 12 | 10 | \$33,480 | \$30,500 | \$33,000 | \$34,500 |

* See note on salary tables on page 29 of the Methods section.

SELECT EMPLOYERS

Bethany Christian Services
C-U at Home

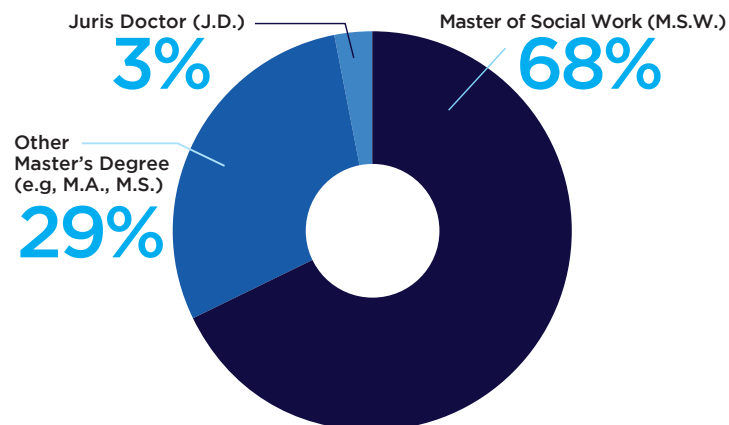
Legal Aid Chicago
The Refugee Center

SELECT GRADUATE AND PROFESSIONAL SCHOOLS

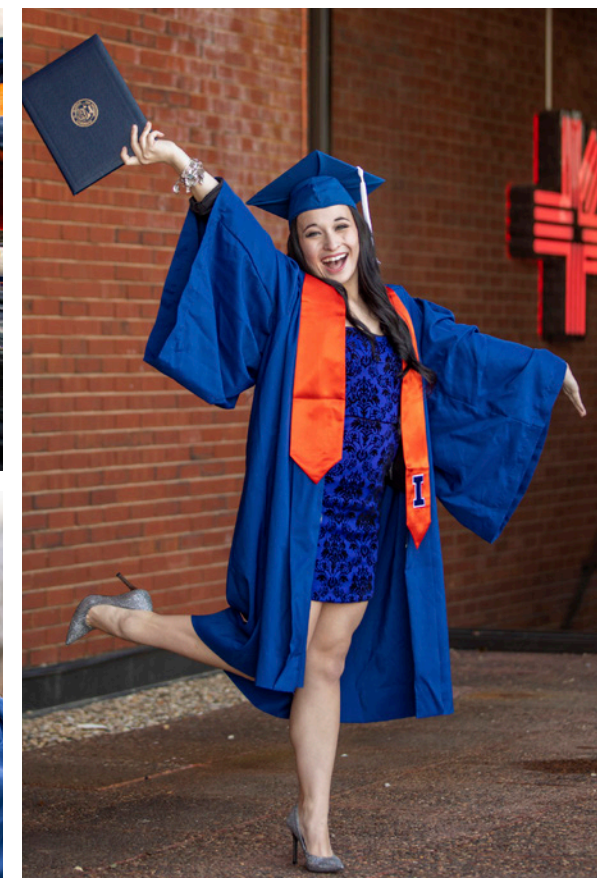
Brown School at Washington University in St. Louis
DePaul University, College of Law
Dominican University
Florida State University
Indiana University-Purdue University Indianapolis
Lincoln Christian University
Loyola University Chicago

Southern Illinois University Edwardsville
University of Chicago
University of Illinois Chicago
University of Illinois Urbana-Champaign
University of Michigan
Washington University

DEGREES SOUGHT



ABOUT OUR GRADUATE OUTCOMES DATA COLLECTION



METHODS

The Illini Success initiative documents the post-graduate outcomes of bachelor's degree recipients from the University of Illinois Urbana-Champaign. This report focuses on experiences of Illinois students who graduated during the 2019-2020 academic year, including August 2019, December 2019, and May 2020 graduation cohorts. Those who receive both bachelor's and master's degrees in the same semester are excluded from these analyses. Lists of graduates were initially drawn from University records during the semester of graduation, and were finalized 10 weeks after graduation to represent an accurate picture of the graduating class for each cohort.

Data Collection

The primary method for collecting graduate outcomes data was an online survey administered by Illini Success team members at the Center for Innovation in Teaching and Learning at the University of Illinois Urbana-Champaign. Several strategies were used to distribute the survey including: centralized emails, college-specific emails, and requests during capstone classes and related college events. Requests to complete the survey were sent approximately 1 month before graduation, at graduation, 3-months post-graduation, and 6-months post-graduation. Direct surveys of graduates were our primary and preferred source of data. However, when survey data were not available, other sources of information were considered. For example, data on continuing education enrollment was obtained from the National Student Clearinghouse and verifiable graduate outcomes reported by employers or gathered by colleges were accepted into the data set. Finally, we incorporated a very limited use of LinkedIn profiles after a careful study of the quality of this data. We used a service provided by LiveAlumni to gather graduate information from publicly available LinkedIn profiles in December 2020. We incorporated this data for only those graduates who: (a) did not have survey responses, National Student Clearinghouse data, employer reports, or college reports of their outcomes, (b) had employment or graduate school data from a LinkedIn website, and (c) posted the start-date for their most current position at least one month after their graduation month. The rationale for these decisions came from a study conducted by the research team at The Career Center. Findings of that study are available by request.

As can be seen in **Table M1**, the majority of the data for this report came from survey responses (61%), while a smaller amount came from secondary sources (39%). In total, we have knowledge of the outcomes of 57% of 2019-2020 bachelor's degree graduates from Illinois.

We recognize that this is a lower knowledge rate than typical years, where our knowledge rate ranges between 71 - 75%. Additionally, our knowledge rate varies considerably across Colleges and Majors. We acknowledge that 2020 was an unprecedented year, where our graduates and

university community experienced notable challenges navigating multiple pandemics that impacted our lives professionally, socially, and personally. It is reasonable to expect that these challenges impacted our degree recipients' post-graduate career transitions. We encourage caution in the interpretation of results and comparison to previous years.

Throughout the report, we provide information on sample size and knowledge rates to help our readers make good use of the data. We also wish to balance our presentation of outcomes. We extend our warm congratulations to graduates who secured employment, enrollment in continuing education, engagement in service roles, or other first destinations. We are proud of their accomplishments in these challenging times, and appreciate when they shared their success stories with us. Additionally, we extend our care and support to those who experienced prolonged challenges and may still be seeking their next steps. It is important to note that this year, as in all years, the Illini Success survey was extended to our graduates with invitations to receive career services throughout the first-year post-graduation.

Table M1
Sources of Graduate Outcomes Data

| Graduate Outcomes Source | Number of Graduates | Percent of Graduates |
|--------------------------------|---------------------|----------------------|
| Primary Source | 2,839 | 35% |
| Survey | 2,471 | 31% |
| Survey + Secondary Source | 368 | 4% |
| Secondary Source | 1,791 | 22% |
| National Student Clearinghouse | 1,015 | 12% |
| College Report | 468 | 6% |
| Social Media | 308 | 4% |
| No Response | 3,430 | 43% |
| Total Knowledge Rate | 4,630 | 57% |

METHODS CONTINUED

We collected data for six months past the May 2020 graduation date, closing data collection in mid-November 2020. For August and December 2019 graduates, we accepted information through mid-November 2020, but did not rigorously pursue responses after their initial six-month time periods. Graduate numbers and knowledge rates by cohort can be seen in **Table M2**.

Table M2
Numbers of Graduates and Knowledge Rates by Graduate Cohort

| | A | B | C | D | E |
|-------------------|---------------------|-----------------------|--------------------------|-------------------------------|---------------------------------|
| Graduation Cohort | Number of Graduates | Number of Respondents | Knowledge Rate by Cohort | Percent of Total Graduates | Percent of Total Knowledge Rate |
| August 2019 | 478 | 225 | 47% | 6% | 5% |
| December 2019 | 1,392 | 832 | 60% | 17% | 18% |
| May 2020 | 6,190 | 3,573 | 58% | 77% | 77% |
| Total | 8,060 | 4,630 | 57% | | |
| Definitions: | | | (by rows, B / A) | (by columns, Row A / Total A) | (by columns, Row B / Total B) |

Privacy and Confidentiality

The privacy and confidentiality of Illinois graduates is highly respected and protected throughout the Illini Success initiative. We greatly appreciate the willingness of Illinois graduates to share their outcomes information, and we make every effort to ensure their comfort and confidence at every stage of participation. All data efforts related to the Illini Success initiative are approved by the University of Illinois Institutional Review Board. A limited number of research team members are granted access to the data. All personally identifying information is removed from presentations of data. To further protect confidentiality, outcomes data is only reported in aggregate, for groups of 10 graduates or more.

In college and major salary analysis tables, in cases where we have fewer than 10 employed graduates and fewer than 5 graduates reporting a salary in 2019-2020, we combine responses with the 2018-2019 class in order to provide salary information while protecting the confidentiality

and privacy of survey respondents. All cases where this occurs are indicated with a star (*) and "employed graduates" and "graduates reporting salary" reflect the total number across the two years. If sufficient numbers cannot be reached by combining two years of data, salary information is not presented in this year's report. For colleges or majors where fewer than 5 graduates report a signing bonus in 2019-2020, dashes are used to indicate that signing bonus information cannot be shared.

Illini Success projects only identify graduates when they give permission to share their information or likeness. When they do so, graduates state specifically what they want to share, and nothing beyond this is released. For example, the Illini Success website presents graduate success stories with photographs and personalized narratives. Being highlighted on the website is voluntary and individuals sign a talent release form to participate.

Terms and Categories

To understand analyses in this report, it is helpful to understand some key terminology that is used to define outcomes and categorize variables.

When completing the online survey, Illinois graduates were asked about their plans following graduation and were given the following response options: working full-time, working part-time, engaged in military service, engaged in volunteer service, seeking employment, enrolling in continuing education, seeking continuing education, unemployed and not seeking, and I'd rather not answer. For ease of interpretation in this overview report, we combine these nine response options into the following five categories:

- **Employed**, which includes: (a) working full-time, (b) working part-time, and (c) engaged in military service
- **Continuing education**
- **Volunteer / service**
- **Seeking**, which includes: (a) seeking employment, and (b) seeking education
- **Other**, which includes: (a) unemployed and not seeking and (b) I'd rather not answer

Little detail was lost in combining groups. In the employment section, small percentages of respondents pursued military careers (1%) or part-time employment (1%). Similarly, a small percentage of respondents indicated that they were “not seeking employment or additional education” (<1%) or would “rather not answer” (1%). Similar percentages of respondents indicated that they were “seeking employment” (6.4%) as compared to “seeking education” (2.2%). Graduates were invited to select responses regarding their post-graduation plans in two ways. First, they selected all statuses that applied to them. For example, a graduate may report both working full-time and being engaged in volunteer work in the community. Second, graduates were asked to select one primary status that best represents their main focus after graduation. Continuing our example, the graduate may identify working full-time as a primary status. This report focuses on graduates’ reported primary statuses.

Further, this report identifies graduates who have “**secured a first destination**” following graduation. We define “**securing a first destination**” as obtaining employment, enrolling in a continuing education program, and/or engaging in volunteer service as a primary status after graduation.

Data Analysis and Presentation

Analyses in this report were informed by standards and guidelines set by the National Center for Education Statistics (NCES, 2012). Unless otherwise noted, findings are presented by unique graduates without duplication. A few tables present results by academic major. In these tables, duplicate counts exist because graduates complete both double majors and dual degrees at the bachelor’s degree level. What a graduate completes more than one major and/or degree, their outcomes data are recognized in each appropriate category for the bachelor’s degree and majors they have completed.

To support ease of reading for various audiences, we excluded non-respondents from each graph, table, and data point (rather than including sections of non-respondents with each question). This decision was made because respondent numbers change throughout the report as different graduates had access to different survey questions. For example, graduates who selected “continuing education” as their primary status did not receive survey questions about “employment.” Throughout the report, the number of respondents (N) is provided with the data for each survey question.

Finally, there is some grouping of majors in this report in order to represent relationships across academic units, to be able to present data for small majors while protecting confidentiality of graduates, or to efficiently and effectively communicate results without overwhelming our readers with detail. Please see the tables in the concluding pages of this report, which outline how majors are represented for each college, and show where combinations have occurred.

For Additional Information

For additional information on this report or the Illini Success initiative, **please contact the Illini Success team at illinisuccess@illinois.edu or (217) 333-0820.**

References

National Center for Education Statistics. (2012). 2012 revision of NCES statistical standards: Final. U.S. Department of Education, Institute of Educational Statistics. Retrieved from <http://nces.ed.gov/statprog/2012>.

College of Agricultural, Consumer and Environmental Sciences

| Report Category | Departments Included | Majors Included |
|---|---|--|
| Agricultural and Consumer Economics | Agricultural and Consumer Economics | Agricultural and Consumer Economics |
| Agricultural Leadership, Education, and Communication | Agricultural Leadership, Education, and Communication | Agricultural Leadership, Education, and Communication; Agricultural Leadership and Science Education |
| Animal Sciences | Animal Sciences | Animal Sciences |
| Crop Sciences and Horticulture | Crop Sciences | Crop Sciences; Horticulture |
| Food Science and Human Nutrition | Food Science and Human Nutrition | Food Science and Human Nutrition |
| Human Development and Family Studies | Human Development and Family Studies | Human Development and Family Studies; Human Resources and Family Studies |
| Natural Resources and Environmental Sciences | Natural Resources and Environmental Sciences | Natural Resources and Environmental Sciences |
| Technical Systems Management | Agricultural and Biological Engineering | Agricultural and Biological Engineering; Technical Systems Management |

College of Applied Health Sciences

| Report Category | Departments Included | Majors Included |
|-----------------------------------|-----------------------------------|---|
| Community Health | Kinesiology and Community Health | Community Health |
| Interdisciplinary Health Sciences | Interdisciplinary Health Sciences | Interdisciplinary Health Sciences |
| Kinesiology | Kinesiology and Community Health | Kinesiology |
| Recreation, Sport, and Tourism | Recreation, Sport, and Tourism | Leisure Studies; Recreation, Sport, and Tourism |
| Speech and Hearing Science | Speech and Hearing Science | Speech and Hearing Science |

College of Education

| Report Category | Departments Included | Majors Included |
|--|----------------------------|---|
| Early Childhood and Elementary Education | Curriculum and Instruction | Early Childhood Education; Elementary Education |
| Learning and Education Studies | Education Administration | Learning and Education Studies |
| Middle Grades Education | Curriculum and Instruction | Middle Grades Education |
| Special Education | Special Education | Special Education |

College of Fine and Applied Arts

| Report Category | Academic Units Included | Majors Included |
|--|---|---|
| Architecture | Architecture | Architectural Studies |
| Art and Design | Art and Design | Art Education; Graphic Design; History of Art; Industrial Design; New Media; Painting; Photography; Studio Art |
| Dance, Music, and Theatre | Dance; Music; Theatre | Dance; Instrumental Music; Jazz Performance; Lyric Theatre; Music; Music Composition; Music Education; Open Studies; Voice; Theatre |
| Landscape Architecture and Urban and Regional Planning | Landscape Architecture; Urban and Regional Planning | Landscape Architecture; Urban Studies and Planning |

Gies College of Business

| Report Category | Departments Included | Majors Included |
|-------------------------|-------------------------|---|
| Accountancy | Accountancy | Accountancy |
| Finance | Finance | Finance |
| Information Systems | Business Administration | Information Systems; Information Systems & Information Technology |
| Management | Business Administration | Management |
| Marketing | Business Administration | Marketing |
| Operations Management | Business Administration | Business Process Management; Operations Management |
| Supply Chain Management | Business Administration | Supply Chain Management |

Grainger College of Engineering

| Report Category | Departments Included | Majors Included |
|---|---|---|
| Aerospace Engineering | Aerospace Engineering | Aerospace Engineering |
| Agricultural and Biological Engineering | Engineering Administration | Agricultural and Biological Engineering |
| Bioengineering | Bioengineering | Bioengineering |
| Civil Engineering | Civil and Environmental Engineering | Civil Engineering |
| Computer Engineering | Electrical and Computer Engineering | Computer Engineering |
| Computer Science | Computer Science | Computer Science |
| Electrical Engineering | Electrical and Computer Engineering | Electrical Engineering |
| Industrial Engineering | Industrial and Enterprise Systems Engineering | Industrial Engineering |
| Materials Science and Engineering | Materials Science and Engineering | Materials Science and Engineering |
| Mechanical Science and Engineering | Mechanical Science and Engineering | Engineering Mechanics; Mechanical Engineering |
| Nuclear, Plasma, and Radiological Engineering | Nuclear, Plasma, and Radiological Engineering | Nuclear, Plasma, and Radiological Engineering |
| Physics | Physics | Engineering Physics; *also Physics majors from the College of Liberal Arts and Sciences |
| Systems Engineering and Design | Industrial and Enterprise Systems Engineering | Systems Engineering and Design |

***Note** that due to strong cross-campus partnerships and overlaps in course offerings between Engineering Physics (in the Grainger College of Engineering) and Physics (in the College of Liberal Arts and Sciences) these two majors are presented together in the Illini Success college-level tables. In the Grainger College of Engineering tables they are included in the major category of "Physics."

College of Liberal Arts & Sciences

| Report Category | Departments Included | Majors Included |
|--|---|---|
| Astronomy and Physics | Astronomy; LAS Administration | Astronomy; Computer Science and Astronomy; Physics; *also Engineering Physics majors from Grainger College of Engineering |
| Biological Sciences | Biochemistry; School of Integrative Biology; School of Molecular and Cellular Biology | Biochemistry; Integrative Biology; Molecular and Cellular Biology |
| Chemical Engineering and Chemistry | Chemical & Biomolecular Engineering; Chemistry | Chemical Engineering; Chemistry; Computer Science and Chemistry |
| Communication | Communication | Communication; Speech Communication |
| Earth, Society and Environment | Atmospheric Sciences; Geography and Geographic Information Science; Geology; School of Earth, Society, and Environmental Administration | Atmospheric Sciences; Geography and Geographic Information Science; Geology; Earth, Society, and Environment; Earth, Society, and Environmental Sustainability |
| Economics | Economics | Computer Science & Economics; Economics; Economics & Quantitative Economics |
| English and Creative Writing | English | Creative Writing; English; Rhetoric |
| History and Philosophy | History; LAS Administration; Philosophy | History; History of Art; Philosophy |
| Literatures, Cultures and Linguistics | Classics; Comparative & World Literature; E Asian Languages and Cultures; French and Italian; Germanic Languages and Literature; Linguistics; Religion; Slavic Languages & Literature; Spanish and Portuguese | Classics; Comparative Literature; E Asian Languages and Cultures; French; Italian; Germanic Languages and Literature; Germanic Studies; Computer Science & Linguistics; Linguistics; Portuguese; Slavic Studies; Spanish; Teaching of Spanish |
| Mathematics and Statistics | Mathematics; Statistics | Actuarial Sciences; Math and Computer Science; Mathematics; Statistics; Statistics and Computer Science |
| Political Science, Global Studies, and Area Studies | LAS Administration; Political Science; Russian, E. European, Eurasn Ctr | Global Studies; Political Science; Russian, E Eur, Eurasian St |
| Psychology | Psychology | Psychology |
| Sociology, Anthropology and Interdisciplinary Cultural Studies | African American Studies; Anthropology; Asian American Studies; Gender and Women's Studies; LAS Administration; Latin American and Caribbean Studies; Latina/Latino Studies; Sociology | African American Studies; Anthropology; Asian American Studies; Computer Science and Anthropology; Gender and Women's Studies; Individual Plans of Study; Interdisciplinary; Latin American Studies; Latina/Latino Studies; Sociology |

***Note** that due to strong cross-campus partnerships and overlaps in course offerings between Physics (in the College of Liberal Arts & Sciences) and Engineering Physics (in the Grainger College of Engineering) these two majors are presented together in the Illini Success college-level tables. In the College of Liberal Arts & Sciences tables they are included in the Discipline and Major category of "Astronomy and Physics."

College of Media

| Report Category | Departments Included | Majors Included |
|--------------------------|--|--|
| Advertising | Advertising | Advertising |
| Journalism | Journalism | Broadcast Journalism; Journalism; News-Editorial |
| Media and Cinema Studies | Institute of Communications Research; Media and Cinema Studies | Media Studies; Media and Cinema Studies |

School of Social Work

| Report Category | Departments Included | Majors Included |
|-----------------|----------------------|-----------------|
| Social Work | Social Work | Social Work |