

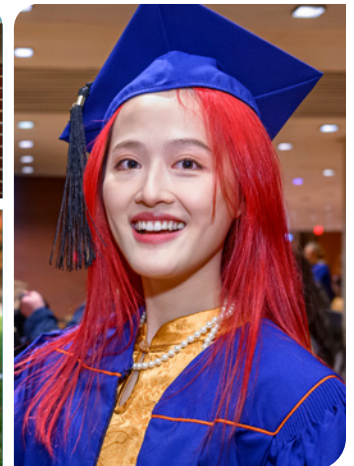
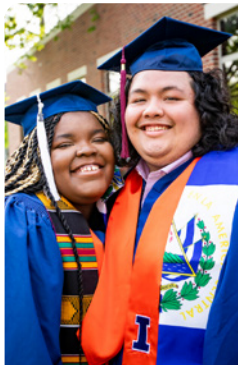


UNIVERSITY OF ILLINOIS URBANA-CHAMPAIGN

ILLINI SUCCESS

Individual achievements. Global impact.
Experience our points of pride.

ALL CAMPUS UNDERGRADUATE 2021-2022 REPORT



2021-2022 HIGHLIGHTS

UNIVERSITY OF ILLINOIS

The Illini Success initiative gathers data about the post-graduation pursuits of bachelor's degree recipients at the University of Illinois Urbana-Champaign. This report focuses on experiences of Illinois students who graduated during the 2021-2022 academic year, including August 2021, December 2021, and May 2022 graduation cohorts.

Post-graduate outcomes were identified for 59% of the graduates, two percentage points higher than the previous cohort. Within the data collected, 95% of reporting graduates had secured a first destination of employment,

additional education, or volunteer/service work within six months of graduation. Knowledge rates vary considerably across Colleges and majors. Throughout the report, sample size and knowledge rates are reported to help make appropriate use of the data. As with all data sets, careful interpretation of the results is encouraged.

Warm congratulations are extended to all the graduates. Much appreciation is extended to those who shared information about their post-graduation endeavors and their success stories for this report.

SOME KEY FINDINGS FROM THE 2021-2022 GRADUATING CLASS

59%

knowledge rate of where our graduates have landed

47

U.S. states and 21 foreign countries were represented as first destination locations

95%

secured a first destination of employment (57%), additional education (38%), or volunteer position (<1%)

88%

of graduates report participating in experiential learning opportunities while at Illinois

75%

of Illinois residents secured their first destination within the state of Illinois (67% of graduates overall remain in Illinois)

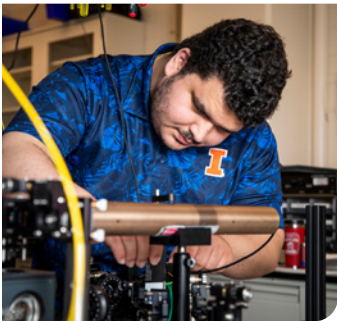
44%

of graduates who participated in experiential learning opportunities received a full-time job offer as a result

\$75K

is the average salary reported by full-time employed bachelor's degree graduates across the university

CAMPUS OVERVIEW



2021-2022 Graduate Outcomes

Here is an overview of Illinois graduates' next steps after their undergraduate degrees. Graduates who "secured a first destination" include those who are employed (including military service), enrolled in a continuing education program, or serving in a volunteer organization. Graduates may also be seeking employment or education opportunities, or have other plans (taking time for travel, family, etc.).

College	Number of Graduates	Number Responded	Response Rate	Secured First Destination	Employed	Continuing Education	Volunteer/Service	Seeking	Other
ACES	747	362	49%	96%	53%	42%	0%	4%	<1%
Applied Health Sciences	594	364	61%	96%	25%	71%	<1%	4%	0%
Gies Business	828	713	86%	98%	74%	24%	0%	2%	<1%
Education	159	103	65%	96%	84%	12%	0%	4%	0%
Grainger Engineering	1,786	1,069	60%	97%	62%	35%	0%	3%	<1%
Fine + Applied Arts	403	234	58%	89%	54%	35%	0%	10%	<1%
Information Sciences	49	28	57%	100%	89%	11%	0%	0%	0%
Liberal Arts & Sciences	3,286	1,747	53%	94%	52%	42%	<1%	6%	<1%
Media	301	178	59%	87%	70%	17%	0%	12%	<1%
Social Work	76	60	79%	98%	12%	86%	0%	2%	0%
All Graduates	8,102	4,756	59%	95%	57%	38%	<1%	5%	<1%

Employment

Here are select employers and employment industries that hired 2021-2022 Illinois graduates. These lists are not exhaustive, but rather focus on the employers and industries that hired the greatest number of graduates overall, with attention paid to representing graduates from all Colleges. For greater detail, visit the College pages of this report and the Illini Success website.

SELECT EMPLOYERS

Employed more than 40 graduates

Deloitte
EY
KPMG
PricewaterhouseCoopers (PwC)

Employed more than 20 graduates

Accenture
Amazon
Crowe
Epic Systems
Facebook/Meta
Google
Microsoft

Employed more than 15 graduates

Chicago Public Schools
JPMorgan Chase
Medline Industries
Protiviti

United Airlines
University of Illinois
Urbana-Champaign

Employed more than 10 graduates

Archer Daniels Midland (ADM)
Boeing
Caterpillar
Capital One
Goldman Sachs
PepsiCo
RSM

Employed more than 5 graduates

3M
Abbott
Aon
Bank of America
Burns & McDonnell
Capgemini
Cargill
Champaign Unit 4
School District

Constellation
Discover Financial Services
Echo Global Logistics
Eli Lilly & Co.
Epsilon
Frito-Lay
General Motors
Grant Thornton
IBM
Intel
John Deere
Kimley-Horn
Motorola Solutions
Northern Trust Corporation
Northrop Grumman
NTT DATA
NVIDIA
Schaumburg Community
Consolidated School District 54
Sequence
Synchrony Financial
West Monroe Partners
Texas Instruments
The Kraft Heinz Company
W. W. Grainger
Wells Fargo
William Blair & Company

Employed graduates

AT&T
Beaumont Animal Clinic
Carle Health
Centers for Disease Control
and Prevention
Clean Harbors Environmental
Services
Cunningham Children's Home
ExxonMobil
Heartland Alliance
Illinois Department
of Transportation
LaSalle Network
Mars
Nathan Wright Landscape Design
Procter & Gamble
Sony Music Publishing
State Farm Insurance
Teach for America
The Walsh Group
The Walt Disney Company
U.S. Patent and Trademark Office
Walgreens
WCIA
Willis Towers Watson

SELECT INDUSTRIES

Employed more than 100 graduates

Accounting
Banking & Financial Services
Computer Systems Design
& Networks
Consulting
Education, Pre-K-12 Education
High Tech / Information
Technology

Employed more than 75 graduates

Advertising, PR & Marketing
Computer & Electronic Products
Healthcare Services & Hospitals
Investment & Finance

Employed more than 50 graduates

Aerospace & Aviation
Consumer Services & Products
Food & Beverage
Insurance
Management Consulting
Manufacturing

Employed more than 25 graduates

Automotive
Business Services
Civil Engineering
Construction
Education, Higher Education
Electronics & Electronic
Manufacturing
Human Resources
Legal Services
Medical Devices

Non-Profit/Philanthropy
Pharmaceuticals
Research & Science
Scientific & Technical Consulting
Transportation & Logistics
Utilities & Renewable Energy

Employed more than 10 graduates

Agriculture & Agri-Business
Architecture & Planning
Biotechnology & Life Sciences
Chemicals
Design
Education, Other
Entrepreneurial/Start-Ups
Environment & Natural Resources
Government - Local, State
& Federal
Health, Wellness & Fitness
Internet
Journalism, Media & Publishing

Mechanical & Industrial
Engineering
Military & Defense
Movies, TV, Music
Oil & Gas
Real Estate
Retail Trade
Social & Human Services
Sports & Leisure

Employed graduates

Animal & Wildlife
Communication Services
Fashion & Apparel
Hotel, Restaurant, & Hospitality
Law Enforcement & Security
Mining & Metals
Museums, Historical Sites,
& Libraries
Performing & Fine Arts
Politics
Travel & Tourism
Veterinary

Annual Salary of Full-Time Employed Graduates

Across the 2021-2022 graduating class respondents, 52% of full-time employed respondents reported salaries, averaging \$74,974. In addition, 28% reported signing bonuses, with a median of \$5,000.

College	Employed Graduates	Graduates Reporting Salary	Average Salary	25th Percentile	50th Percentile	75th Percentile	Graduates Reporting Signing Bonus	Median Signing Bonuses
ACES	186	100	\$56,490	\$45,000	\$58,000	\$65,000	17	\$5,000
Applied Health Sciences	84	23	\$46,917	\$37,000	\$45,000	\$51,000	5	\$5,000
Gies Business	516	311	\$73,530	\$65,000	\$70,000	\$80,000	218	\$5,000
Education	87	16	\$47,750	\$43,500	\$47,000	\$52,500	--	--
Grainger Engineering	653	443	\$92,813	\$75,000	\$83,000	\$112,500	297	\$8,500
Fine + Applied Arts	120	40	\$56,386	\$45,000	\$54,000	\$66,550	13	\$2,500
Information Sciences	25	16	\$80,813	\$71,000	\$81,000	\$84,000	13	\$5,000
Liberal Arts & Sciences	881	413	\$74,705	\$52,000	\$72,000	\$85,000	186	\$10,000
Media	121	42	\$54,195	\$44,000	\$52,000	\$60,000	18	\$2,250
Social Work	—	—	—	—	—	—	—	—
All Graduates	2,631	1,372	\$74,974	\$60,000	\$72,500	\$85,000	745	\$5,000

*See note on salary tables in the Privacy and Confidentiality subsection of the Methods section.

Continuing Education

Here is information about the graduate and professional school choices of 2021-2022 Illinois graduates. These lists are not exhaustive, but rather focus on the institutions and programs of study that enrolled the greatest number of graduates overall, with attention paid to representing graduates from all Colleges. For greater detail, visit the College pages of this report and the Illini Success website.

SELECT GRADUATE AND PROFESSIONAL SCHOOLS

Enrolled more than 800 graduates

University of Illinois
Urbana-Champaign

Enrolled more than 30 graduates

Columbia University
Northwestern University
Rush University
University of Illinois Chicago

Enrolled more than 15 graduates

DePaul University
Loyola University Chicago
New York University
Southern Illinois University
Carbondale
Stanford University
University of Chicago
University of Michigan
University of Wisconsin-Madison

Enrolled more than 10 graduates

Carnegie Mellon University
Duke University
Georgia Institute of Technology
Indiana University Bloomington
University of California, Berkeley
University of California,
Los Angeles
University of Southern California
Washington University
in St. Louis

Enrolled more than 5 graduates

Boston University
Cornell University
Dominican University
Elmhurst University
Illinois Institute of Technology
Illinois State University
Johns Hopkins University
Massachusetts Institute
of Technology

Northern Illinois University
Princeton University
Purdue University
Rosalind Franklin University
of Medicine and Science
Saint Louis University
The Chicago School
of Professional Psychology
The Ohio State University
University of California,
San Diego
University of Iowa
University of Pennsylvania
University of Texas at Austin
University of Washington-
Seattle

Enrolled graduates

Brown University
California Institute of the Arts
Case Western Reserve University
Creighton University School
of Dentistry
Eastern Illinois University
Georgetown University

Harvard University
London Business School
Marquette University
Medical College of Wisconsin
Michigan State University
National University
of Health Sciences
North Carolina State University
Palmer College of Chiropractic
Pennsylvania State University
Rice University
Savannah College of Art
and Design
School of The Art Institute
of Chicago
Texas A&M University
University of Colorado Boulder
University of Illinois Springfield
University of Kentucky
University of Maryland,
College Park
University of Minnesota-Twin Cities
University of Nebraska-Lincoln
University of Nevada, Las Vegas
University of North Carolina
at Chapel Hill

SELECT AREA OF STUDY

Enrolled more than 100 graduates

Accountancy
Computer & Information
Sciences
Engineering - Computer,
Electrical
Health Professions & Sciences

Enrolled more than 50 graduates

Business & Management
Engineering - Aerospace,
Materials, Mechanical
Engineering - Civil,
Environmental, Industrial
Legal Professions & Studies
Medicine
Social Work

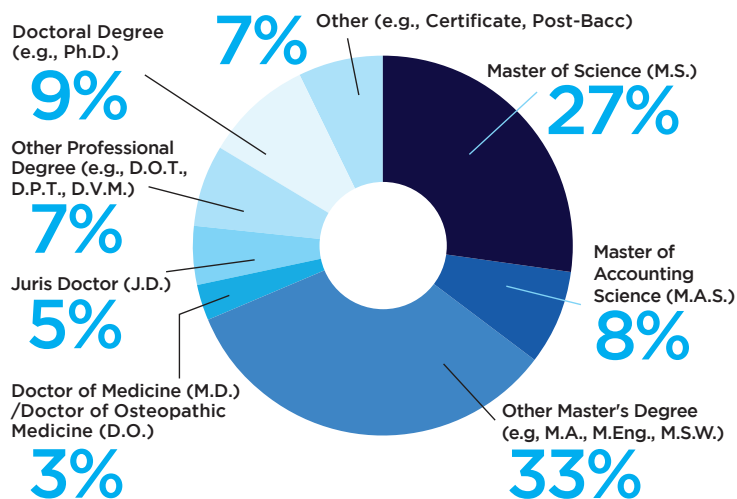
Enrolled more than 25 graduates

Architecture & Landscape
Architecture
Biological & Biomedical Sciences
Data Science & Informatics
Education & Teaching
Engineering - Agricultural,
Bio, Chemical
Human Resources
& Labor Relations
Mathematics & Statistics
Nursing
Physical Sciences
Psychology

Enrolled more than 15 graduates

Animal Sciences
Community & Public Health
Environment & Natural Resources
Finance
Health Administration

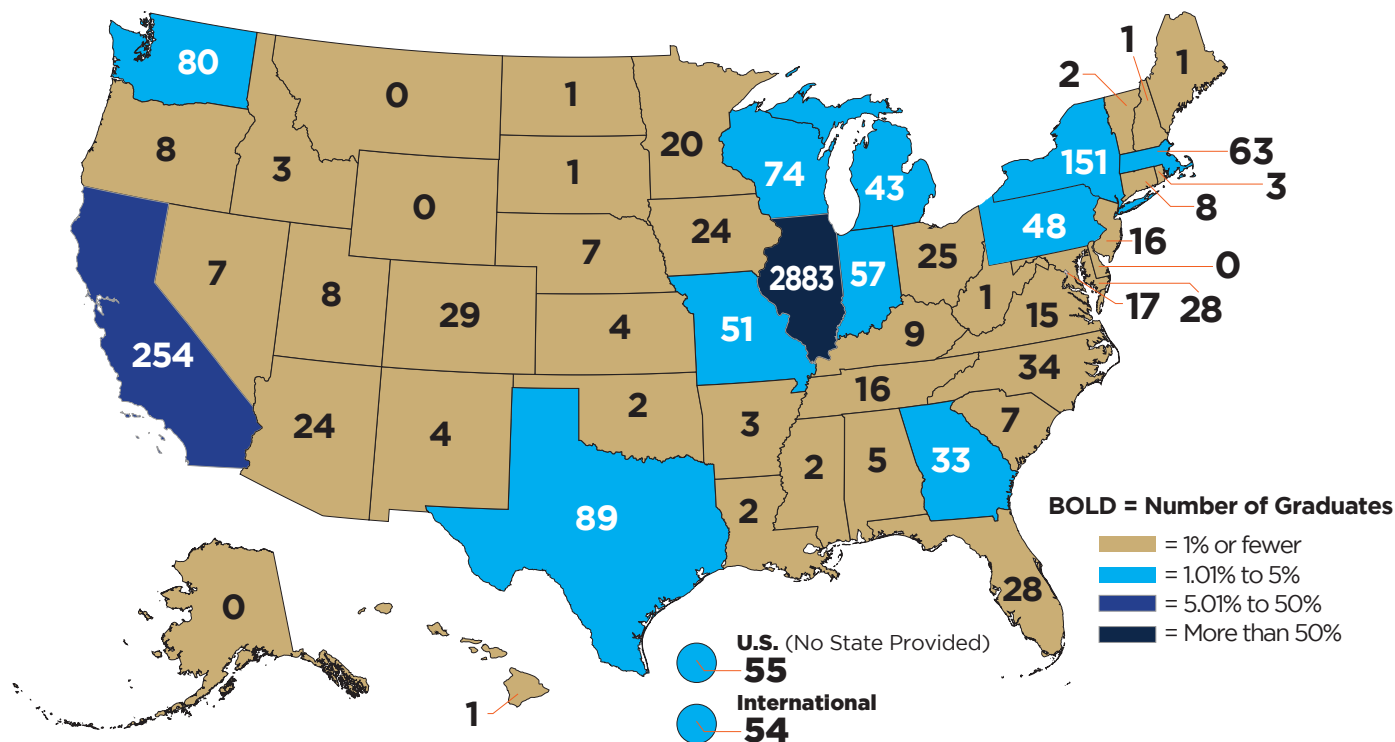
DEGREES SOUGHT



1,489 Respondents

Geographic Locations

As shared by 4,301 graduates, the majority of the 2021-2022 class (67%) chose a first destination within the state of Illinois, with an additional 32% selecting other U.S. destinations. Some of the most common U.S. destinations included states such as California, New York, Texas, Washington, Wisconsin, Massachusetts, Indiana, Missouri, and Pennsylvania. An additional 1% of graduates indicated a variety of international locations across the world, including South Korea, Canada, China, India, Spain, Germany, and Japan.



Experiential Learning

Experiential learning activities connect classroom knowledge to the world in which students live and work. These experiences help students explore career and personal interests, develop transferable skills, expand networks and references, and strengthen their portfolios as they prepare to transition beyond their bachelor's degrees. 88% of 2021-2022 graduates reported participating in experiential learning. Here is a snapshot of how they gained experience, as shared by 2,374 graduates.

Experiential Learning Activity	Number of Respondents	Percentage of Respondents
Internships	1,725	73%
Undergraduate Research Projects	684	29%
Study Abroad	160	7%
Service learning / volunteering	345	15%
Assistantships	432	18%
Field experiences / practicums	233	10%
Student teaching	156	7%
Clinical experiences	126	5%
Co-ops	114	5%
I did not complete any of the above	232	10%

88%

of graduates reported participating in experiential learning

44%

of graduates who participated in experiential learning activities received a full-time job offer as a result

THE COLLEGES & SCHOOLS



College of Agricultural, Consumer and Environmental Sciences



GRADUATE STORIES

Emmarie Alexander

Animal Sciences, May 2022

“ I served as president for the Wildlife Society for a couple of years, a really great organization for students who are interested in wildlife. We had a lot of research opportunities where we collected the data ourselves, analyzed it and even presented at the undergraduate research symposium. Through that and other activities, I got to meet a lot of different students, and I had the opportunity to even mentor some undergraduates. ”

2021-2022 GRADUATE OUTCOMES

MAJOR	Number of Graduates	Number Responded	Response Rate	Secured First Destination	Employed	Continuing Education	Volunteer/Service	Seeking	Other
Agricultural & Consumer Economics	251	100	40%	97%	68%	29%	0%	2%	1%
Agricultural Leadership & Science Education†	37	25	68%	88%	76%	12%	0%	12%	0%
Animal Sciences	129	67	52%	94%	28%	66%	0%	4%	2%
Crop Sciences & Horticulture†	34	21	62%	100%	52%	48%	0%	0%	0%
Food Science & Human Nutrition	75	40	53%	100%	33%	67%	0%	0%	0%
Human Development & Family Studies	75	40	53%	95%	33%	62%	0%	5%	0%
Natural Resources & Environmental Sciences	76	34	45%	94%	62%	32%	0%	6%	0%
Technical Systems Management	75	38	51%	97%	76%	21%	0%	3%	0%
All ACES	747	362	49%	96%	53%	42%	0%	4%	<1%

† See College and Majors tables at the end of the Methods section for notes on these majors.

SELECT EMPLOYERS

Accenture Federal Services	Eli Lilly & Co.	John Deere	Rush University Medical Center
Amazon	Enterprise Holdings	JPMorgan Chase	Savant Wealth Management
Archer Daniels Midland (ADM)	ERM: Environmental Resources Management	Keurig Dr. Pepper	Soular
Bank of America	Ford Motor Company	Lighthouse Autism Center	Syngenta
Boeing	Hormel Foods	Lincoln Park Zoo	The Mather Group
Cargill	Illinois High School	L'Oréal	U.S. Department of Agriculture
Champaign County Humane Society	Illinois Natural History Survey	McHugh Construction	United Airlines
City of Chicago	Integrated Bioprocessing Research Lab	McKinsey & Company	Vanguard
Conagra Brands	J.A. Watts	Nutrien Ag Solutions	Veterinary Innovative Partners
Corteva Agriscience		PJ Hoerr Construction	Zoetis
		PwC	

SELECT GRADUATE AND PROFESSIONAL SCHOOLS

American University	New York University	Stanford University	University of Illinois
Brandeis University	North Carolina State University	Temple University	Urbana-Champaign, College of Veterinary Medicine
Cornell University	Northern Illinois University	Texas A&M University	University of Kentucky
DePaul University	Northwestern University	The Ohio State University	University of Missouri-Columbia
Dominican University	Purdue University	University of Arkansas	University of New Hampshire
Erikson Institute	Roosevelt University	University of California, Berkeley	at Manchester
Georgetown University	Ross University School of Veterinary Medicine	University of Chicago	University of South Florida
Kendall College	Rush University	University of Houston	University of Tennessee
Loyola Marymount University	Southern Illinois University Carbondale	University of Illinois Chicago	University of Vermont
Loyola University Chicago		University of Illinois Springfield	University of Wisconsin-Madison
Michigan State University		University of Illinois Urbana-Champaign	Washington University in St. Louis

ANNUAL SALARY OF FULL-TIME EMPLOYED GRADUATES

MAJOR	Employed Graduates	Graduates Reporting Salary	Average Salary	25th Percentile	50th Percentile	75th Percentile	Graduates Reporting Signing Bonus	Median Signing Bonus
Agricultural & Consumer Economics	67	43	\$63,421	\$57,000	\$63,000	\$70,000	11	\$5,000
Agricultural Leadership & Science Education†	19	9	\$52,061	\$42,000	\$52,500	\$54,800	—	—
Animal Sciences	18	5	\$31,000	\$30,000	\$30,000	\$32,000	—	—
Crop Sciences & Horticulture†	11	6	\$50,175	\$40,000	\$50,000	\$63,750	—	—
Food Science & Human Nutrition	13	6	\$55,480	\$53,000	\$55,000	\$57,000	—	—
Human Development & Family Studies	12	5	\$39,030	\$33,000	\$41,150	\$43,000	—	—
Natural Resources & Environmental Sciences	20	11	\$41,175	\$35,000	\$40,976	\$46,000	—	—
Technical Systems Management	26	15	\$66,667	\$62,000	\$65,000	\$72,000	—	—
All ACES	186	100	\$56,490	\$45,000	\$58,000	\$65,000	17	\$5,000

* See note on salary tables in the Methods section.

College of Applied Health Sciences



GRADUATE STORIES

Faye Yang

Interdisciplinary Health Sciences, May 2022

“ Being a campus tour guide allowed me to see the diversity of the families that come to campus. For some of them, they have many generations of alumni, and for others it’s their first child to go to college. That was the boat that I was in as a first-generation student, and I always loved connecting with people in that sense. ”

2021-2022 GRADUATE OUTCOMES

MAJOR	Number of Graduates	Number Responded	Response Rate	Secured First Destination	Employed	Continuing Education	Volunteer/Service	Seeking	Other
Community Health	140	82	59%	95%	35%	59%	1%	5%	0%
Interdisciplinary Health Sciences	114	67	59%	99%	18%	81%	0%	1%	0%
Kinesiology	166	96	58%	97%	26%	71%	0%	3%	0%
Recreation, Sport & Tourism	91	50	55%	92%	38%	54%	0%	8%	0%
Speech & Hearing Science	83	69	83%	97%	9%	88%	0%	3%	0%
All Applied Health Sciences	594	364	61%	96%	25%	71%	<1%	4%	<1%

SELECT EMPLOYERS

Advocate Lutheran General Hospital	Chicago Speech Therapy	Exact Sciences	Massachusetts General Hospital
Aon	Chicago Steel Hockey Team	Fox Valley Orthopedics	Medline Industries
Beat the Streets Chicago	Cigna	Gateway Grizzlies Baseball	Midwest Cardiovascular Institute
Carle Health	Claro Healthcare	Healing Rehab Physical Therapy SC	Nordic Consulting
Centers for Disease Control and Prevention	CST Academy	Healthworks	Northwestern Memorial Hospital
Chicago City Soccer Club	Cunningham Children's Home	Huron Consulting Group	Optimum Healthcare IT
Chicago Cougars	CVS Health	Jayakar Medical	PatientPoint
Chicago Occupational Therapy	Dr. Kordas Pediatric Health Care Center	Kickapoo Adventures	Pillars Community Health
	Duly Health and Care	Kroenke Sports & Entertainment	Rush University Medical Center
		MADE Hoops	Stryker

SELECT GRADUATE AND PROFESSIONAL SCHOOLS

Boston University	Loyola University Chicago	Rosalind Franklin University of Medicine and Science	University of Houston
DePaul University	Marquette University	Rush University	University of Illinois Chicago
Duke University	Medical University of South Carolina	Saint Louis University	University of Iowa
Eastern Illinois University	Midwestern University	Saint Xavier University	University of Minnesota- Twin Cities
Elmhurst University	National University of Health Sciences	Seton Hall University	University of North Carolina at Chapel Hill
Governors State University	New York University	Southern Illinois University Carbondale	University of Washington-Seattle
Illinois College of Optometry	North Central College	The Chicago School of Professional Psychology	University of Wisconsin-Madison
Illinois Institute of Technology	Northern Illinois University	The Ohio State University	Vanderbilt University
Illinois State University	Northwestern University	University of Central Florida	Washington University in St. Louis
Indiana University Bloomington	Palmer College of Chiropractic		
Johns Hopkins University			
Lewis University			

ANNUAL SALARY OF FULL-TIME EMPLOYED GRADUATES

MAJOR	Employed Graduates	Graduates Reporting Salary	Average Salary	25th Percentile	50th Percentile	75th Percentile	Graduates Reporting Signing Bonus	Median Signing Bonus
Community Health	28	9	\$54,056	\$45,000	\$50,000	\$68,000	—	—
Interdisciplinary Health Sciences*	25	9	\$46,740	\$30,430	\$44,340	\$62,500	—	—
Kinesiology	22	6	\$42,333	\$36,000	\$43,500	\$50,000	—	—
Recreation, Sport & Tourism	19	5	\$41,600	\$37,000	\$40,000	\$45,000	—	—
Speech & Hearing Science	—	—	—	—	—	—	—	—
All Applied Health Sciences	84	23	\$46,917	\$37,000	\$45,000	\$51,000	5	\$5,000

* See note on salary tables in the Methods section.

Gies College of Business



GRADUATE STORIES

Hafsa Amir

Accountancy, May 2022

“ I joined an InBound Orientation session when I was an incoming freshman at Illinois, which I really enjoyed, so I decided to apply to be an orientation leader. I really enjoyed interacting with other students, including the freshman, because I was also in their position once. I knew I could make an impact on other people’s lives by sharing my experience and helping them grow as well, just as I have grown here at Illinois. ”

2021-2022 GRADUATE OUTCOMES

MAJOR	Number of Graduates	Number Responded	Response Rate	Secured First Destination	Employed	Continuing Education	Volunteer/Service	Seeking	Other
Accountancy	352	321	91%	99%	56%	43%	0%	1%	0%
Finance	301	259	86%	99%	89%	10%	0%	<1%	0%
Information Systems [†]	240	213	89%	97%	82%	15%	0%	3%	<1%
Management	64	46	72%	96%	74%	22%	0%	4%	0%
Marketing	156	131	84%	95%	89%	6%	0%	5%	0%
Operations Management [†]	17	14	82%	100%	79%	21%	0%	0%	0%
Supply Chain Management	55	52	95%	98%	98%	0%	0%	0%	2%
All Gies Business	828	713	86%	98%	74%	24%	0%	2%	<1%

[†] See College and Majors tables at the end of the Methods section for notes on these majors.

SELECT EMPLOYERS

3M	Brown Gibbons Lang & Company	FTI Consulting	Ocean Tomo
Abbott	Busey Bank	Goldman Sachs	Paylocity
AbbVie	Capgemini Invent	Grant Thornton	PepsiCo
Accenture	Caterpillar	Houlihan Lokey	Perella Weinberg Partners
Alight Solutions	CDW	Huron Consulting Group	Plante Moran
Amazon	Citibank	IBM	PNC Bank
Andersen Tax	Claro Healthcare	JPMorgan Chase	Protiviti
Aon	CNA Insurance	Keystone Capital	Rödl & Partner
Bain & Company	Crowe	KPMG	RSM
Baker Tilly	Deloitte	Lincoln International	Stout Risius Ross
Bank of America	Discover Financial Services	Mars	Synchrony Financial
BDO USA	Echo Global Logistics	Medline Industries	The Kraft Heinz Company
BMO Capital Markets	Eli Lilly & Co.	MoLo Solutions	United Airlines
BMO Harris Bank	Epic Systems	Morningstar	Utilities International
Boeing	Epsilon	Motorola Solutions	W. W. Grainger
Boston Consulting Group	EY	Northern Trust Corporation	Wells Fargo
BP		NTT DATA	William Blair & Company

SELECT GRADUATE AND PROFESSIONAL SCHOOLS

College of DuPage	New York University	University of Illinois Chicago	University of Southern California
Columbia University	Northwestern University	University of Illinois Urbana-Champaign	University of Wisconsin-Madison
Cornell University	University of California, Los Angeles	University of Michigan	
Johns Hopkins University			

ANNUAL SALARY OF FULL-TIME EMPLOYED GRADUATES

MAJOR	Employed Graduates	Graduates Reporting Salary	Average Salary	25th Percentile	50th Percentile	75th Percentile	Graduates Reporting Signing Bonus	Median Signing Bonus
Accountancy	176	125	\$74,344	\$65,000	\$70,000	\$78,000	73	\$5,000
Finance	227	142	\$78,907	\$68,000	\$75,000	\$90,000	115	\$6,000
Information Systems [†]	172	112	\$72,359	\$67,000	\$73,000	\$78,000	82	\$5,000
Management	33	12	\$68,575	\$62,500	\$70,000	\$75,450	7	\$5,000
Marketing	112	63	\$66,132	\$58,300	\$66,000	\$73,000	43	\$5,000
Operations Management	11	8	\$66,875	\$57,000	\$73,000	\$75,000	6	\$7,500
Supply Chain Management	51	34	\$70,700	\$61,000	\$68,000	\$75,000	25	\$5,000
All Gies Business	516	311	\$73,530	\$65,000	\$70,000	\$80,000	218	\$5,000

College of Education



GRADUATE STORIES

Melia Watson

Special Education, May 2022

“It was really nice to be able to come into a job with professional contacts already made because of my experience on campus and in the local schools from our student teaching program. I also had other friends from my cohort that were going to be working in the district with me, and so it felt very comfortable, and it has been wonderful.”

2021-2022 GRADUATE OUTCOMES

MAJOR	Number of Graduates	Number Responded	Response Rate	Secured First Destination	Employed	Continuing Education	Volunteer/Service	Seeking	Other
Early Childhood and Elementary Education†	89	64	72%	94%	84%	10%	0%	6%	0%
Learning and Education Studies	10	4	40%	100%	0%	100%	0%	0%	0%
Middle Grades Education	41	26	63%	100%	92%	8%	0%	0%	0%
Special Education	19	9	47%	100%	100%	0%	0%	0%	0%
All Education	159	103	65%	96%	84%	12%	0%	4%	0%

† See College and Majors tables at the end of the Methods section for notes on these majors.

SELECT EMPLOYERS

Addison School District	Emerson Middle School	Lemont-Bromberek Combined	Schaumburg Community
Altamont Grade School	Evanston / Skokie Community	School District 113A	Consolidated School
Archdiocese of Chicago	Consolidated School	Marquardt District 15	District 54
Beach Park School District #3	District 65	Metro Nashville Public Schools	Schneider Elementary
Berwyn North	Fox River Grove School	Naperville Community Unit	School District 49
Campbell-Kapolei Complex	District 3	School District 203	Skokie and Morton Grove
Carpentersville School	Franklin Park School District 84	Niles Elementary School District	School District 69
District 300	Grayslake Middle School	North Shore School	St. Matthew Catholic School
Cass School District 63	Hawthorn District 73	District 112	The Frances Xavier
Champaign Unit 4	Indian Prairie School District 204	Northbrook School District	Warde School
School District	International School in Korea	Plainfield Community Consolidated	Tippecanoe School
Chicago Public Schools	IPSD 204	School District 202	Corporation
City of Chicago	Jefferson Middle School	Pleasantdale Elementary School	Unity West Elementary School
Community Consolidated	Jere Baxter Middle School	Prairie Grove School District 46	Valley View School District
District 21	Juno Search Partners	Prospect Heights School	Wauconda Grade School
Community Consolidated	Kildeer Countryside School	District 23	Wheaton-Warrenville
School District 62	District 96	Romona Elementary School	District 200
Danville District 118	Lake Villa District 41	Roselle School District	Wheeling Community
East Prairie	Lake Zurich High School	Saint Louis Public Schools	Consolidated School District

SELECT GRADUATE AND PROFESSIONAL SCHOOLS

National Louis University	The Ohio State University	University of Illinois	University of St. Francis
Northern Illinois University	University of Illinois Chicago	Urbana-Champaign	

ANNUAL SALARY OF FULL-TIME EMPLOYED GRADUATES

MAJOR	Employed Graduates	Graduates Reporting Salary	Average Salary	25th Percentile	50th Percentile	75th Percentile
Early Childhood and Elementary Education†	54	9	\$44,222	\$42,000	\$45,000	\$47,000
Learning and Education Studies*	—	—	—	—	—	—
Middle Grades Education	24	5	\$52,200	\$52,000	\$53,000	\$56,000
Special Education*	37	10	\$51,590	\$47,000	\$48,200	\$58,875
All Education	87	16	\$47,750	\$43,500	\$47,000	\$52,500

* See note on salary tables in the Methods section.

The Grainger College of Engineering



GRADUATE STORIES

Alison Nunes

Materials Science and Engineering, May 2022

“ At Illinois I was an Engineering Learning Assistant with the Grainger Engineering First-Year Experience program, which involved teaching different classes. As a Materials major, I had the opportunity to teach a class of first-year MatSE students, and I really loved being able to share resources and share about my own experiences, including the pitfalls I had run into. ”

2021-2022 GRADUATE OUTCOMES

MAJOR	Number of Graduates	Number Responded	Response Rate	Secured First Destination	Employed	Continuing Education	Volunteer/Service	Seeking	Other
Aerospace Engineering	119	77	65%	96%	54%	42%	0%	4%	0%
Agricultural & Biological Engineering	42	25	60%	88%	56%	32%	0%	12%	0%
Bioengineering	79	58	73%	98%	50%	48%	0%	2%	0%
Civil Engineering	157	100	64%	98%	55%	43%	0%	2%	0%
Computer Engineering	318	212	67%	96%	64%	32%	0%	4%	0%
Computer Science	252	134	53%	99%	70%	29%	0%	1%	0%
Electrical Engineering	177	105	59%	96%	56%	40%	0%	4%	0%
Industrial Engineering	79	47	60%	98%	79%	19%	0%	0%	2%
Materials Science and Engineering	87	50	58%	98%	52%	46%	0%	2%	0%
Mechanical Science & Engineering [†]	292	158	54%	98%	68%	30%	0%	1%	<1%
Nuclear, Plasma & Radiological Engineering	23	16	70%	100%	50%	50%	0%	0%	0%
Physics [†]	126	60	48%	92%	44%	48%	0%	8%	0%
Systems Engineering & Design	92	50	54%	98%	80%	18%	0%	2%	0%
All Grainger Engineering	1,786	1,069	60%	97%	62%	35%	0%	3%	<1%

* See note on salary tables in the Methods section.

† See Colleges and Majors tables at the end of the Methods section for notes on these majors.

SELECT EMPLOYERS

3M	Crowe	JPMorgan Chase	Ocient
Abbott	DMC Engineering	Kimley-Horn	PepsiCo
AGCO	Echelon Consulting	Mathworks	Protiviti
Amazon	Epic Systems	Medline Industries	PwC
Apple	ExxonMobil	Micron Technology	Rolls-Royce
Boeing	Facebook/Meta	Microsoft	SpaceX
Burns & McDonnell	General Motors	Milwaukee Tool	SubGrid Solutions
Capital One	Google	Motorola Solutions	Texas Instruments
Caterpillar	IBM	Northrop Grumman	United Airlines
Collins Aerospace	John Deere	NVIDIA	Wolfram Research

SELECT GRADUATE AND PROFESSIONAL SCHOOLS

Carnegie Mellon University	Massachusetts Institute of Technology	Stanford University	University of Colorado Boulder
Columbia University	Medical College of Wisconsin	Texas A&M University	University of Michigan
Cornell University	Pennsylvania State University	University of California, Berkeley	University of Texas at Austin
Georgia Institute of Technology	Princeton University	University of California, San Diego	University of Washington-Seattle

ANNUAL SALARY OF FULL-TIME EMPLOYED GRADUATES

MAJOR	Employed Graduates	Graduates Reporting Salary	Average Salary	25th Percentile	50th Percentile	75th Percentile	Graduates Reporting Signing Bonus	Median Signing Bonus
Aerospace Engineering	41	27	\$82,373	\$70,000	\$80,200	\$85,000	14	\$3,500
Agricultural & Biological Engineering*	14	10	\$69,182	\$70,000	\$72,500	\$75,000	--	--
Bioengineering	28	15	\$76,979	\$71,000	\$75,730	\$81,000	8	\$5,000
Civil Engineering	54	38	\$69,037	\$65,000	\$69,100	\$73,500	19	\$3,000
Computer Engineering	135	104	\$109,176	\$90,000	\$110,000	\$127,500	78	\$15,000
Computer Science	93	70	\$129,377	\$112,500	\$124,000	\$142,000	61	\$30,000
Electrical Engineering	59	48	\$87,769	\$76,000	\$82,000	\$95,000	34	\$6,000
Industrial Engineering	37	20	\$81,275	\$75,000	\$77,000	\$88,000	17	\$5,000
Materials Science and Engineering	26	15	\$71,627	\$70,000	\$72,000	\$79,200	9	\$5,000
Mechanical Science & Engineering†	105	58	\$79,118	\$71,417	\$79,000	\$84,000	35	\$5,000
Nuclear, Plasma & Radiological Engineering*	15	14	\$76,486	\$69,850	\$75,000	\$75,500	--	--
Physics†	26	12	\$84,855	\$50,000	\$75,100	\$121,000	5	\$27,775
Systems Engineering & Design	36	20	\$84,136	\$76,000	\$81,009	\$92,500	12	\$7,250
All Grainger Engineering	653	443	\$92,813	\$75,000	\$83,000	\$112,500	297	\$8,500

College of Fine + Applied Arts



GRADUATE STORIES

Linda Obobaifo

Painting, May 2022

“ I had various opportunities to work in multimedia within my program. Many of my peers and studio faculty were very helpful in enabling me to explore multiple disciplinary fields and media, such as working with fabrics, poetry, music, and more. ”

2021-2022 GRADUATE OUTCOMES

MAJOR	Number of Graduates	Number Responded	Response Rate	Secured First Destination	Employed	Continuing Education	Volunteer/Service	Seeking	Other
Architecture	77	51	66%	100%	24%	76%	0%	0%	0%
Art & Design†	143	80	56%	84%	66%	18%	0%	16%	0%
Dance, Music, & Theatre†	132	70	53%	90%	57%	33%	0%	10%	0%
Landscape Architecture & Urban & Regional Planning†	57	39	68%	82%	62%	20%	0%	15%	3%
All Fine + Applied Arts	403	234	58%	89%	54%	35%	0%	10%	<1%

†See College and Majors tables at the end of the Methods section for notes on these majors.

SELECT EMPLOYERS

Accenture	DGS Retail	Mahomet Seymour Community School District	SGW Architecture & Design
All American Exterior Solutions	Discover Financial Services	Microsoft	Southeast Missouri Regional Planning Commission
Architectural Design Collaborative	Education Justice Project	Motorola Solutions	The Naperville Winds
ARCON Associates	Facebook	Nathan Wright Landscape Design	The Teaching Well
Arup	Funky Junque	Norris Design	Top Secret Toys
Asolo Repertory Theatre	HDR	Pearl Meyer	Upland Design
Baltimore Center Stage	Illinois Criminal Justice Information Authority	PeopleReady	Wade Trim
Beckett and Raedar	Innovative Marketing Solutions	Pivot Design	Walt Disney World
Champaign Unit 4 School District	Insight	Protiviti	Weitzman Associates
Chicago Public Schools	Intel	Protostudios	Workday
Chipman Design Architecture	James Martin Associates	Quincy Public Schools	Yates Construction
Credera	Konstant Home		Zoom
Decatur Public Schools			

SELECT GRADUATE AND PROFESSIONAL SCHOOLS

ArtCenter College of Design	Harvard University	Southern California Institute of Architecture	University of Chicago
Boston Conservatory at Berklee	Illinois Institute of Technology	Southern Illinois University Carbondale	University of Michigan
Boston University	Institute for Advanced Architecture of Catalonia	Stanford University	University of Nevada, Las Vegas
Brandeis University	Maryland Institute College of Art	Temple University	University of Oklahoma
California Institute of the Arts	New York Academy of Art	Texas Christian University	University of Rochester
Carnegie Mellon University	New York University	The Ohio State University	University of Southern California
Columbia College Chicago	Northwestern University	University of British Columbia	University of Wisconsin-Madison
Cornell University	Savannah College of Art and Design		Washington University in St. Louis
Georgia Institute of Technology			

ANNUAL SALARY OF FULL-TIME EMPLOYED GRADUATES

MAJOR	Employed Graduates	Graduates Reporting Salary	Average Salary	25th Percentile	50th Percentile	75th Percentile	Graduates Reporting Signing Bonus	Median Signing Bonus
Architecture*	16	5	\$58,310	\$54,000	\$55,000	\$66,000	—	—
Art & Design†	50	19	\$62,974	\$48,000	\$58,000	\$80,000	—	—
Dance, Music, & Theatre†	36	10	\$52,100	\$38,000	\$47,500	\$64,000	—	—
Landscape Architecture & Urban & Regional Planning†	24	9	\$53,444	\$50,000	\$52,000	\$57,000	5	\$1,900
All Fine + Applied Arts	120	40	\$56,386	\$45,000	\$54,000	\$66,550	13	\$2,500

* See note on salary tables in the Methods section.

School of Information Sciences



GRADUATE STORIES

Cayden Boyer

Information Sciences, May 2022

“ I decided on my current career path after several internship experiences. I discovered that I really liked IT and human resources. I wanted to get involved in something where I could do human resources and information systems consulting, but I also wanted to do something where I could make a difference through my work. ”

2021-2022 GRADUATE OUTCOMES

MAJOR	Number of Graduates	Number Responded	Response Rate	Secured First Destination	Employed	Continuing Education	Volunteer/Service	Seeking	Other
Information Sciences	49	28	57%	100%	89%	11%	0%	0%	0%

SELECT EMPLOYERS

Alteryx
Ardoq
BP
Capgemini
CapTech

Discover Financial Services
Duff & Phelps
EY
Federal Home Loan Bank of Chicago
Forward

General Motors
Huron Consulting Group
JPMorgan Chase
Maven Wave
PwC

Stillman Nature Center
Synchrony Financial
The Aerospace Corporation
United Airlines
Walgreens

SELECT GRADUATE AND PROFESSIONAL SCHOOLS

California State University,
Northridge

Carnegie Mellon University

Duke University

ANNUAL SALARY OF FULL-TIME EMPLOYED GRADUATES

MAJOR	Employed Graduates	Graduates Reporting Salary	Average Salary	25th Percentile	50th Percentile	75th Percentile	Graduates Reporting Signing Bonus	Median Signing Bonus
Information Sciences	25	16	\$80,813	\$71,000	\$81,000	\$84,000	13	\$5,000

College of Liberal Arts & Sciences



GRADUATE STORIES

Eric Plante

Chemical Engineering, May 2022

“What really caught my eye about the energy industry was the fact that you get to go global and interact with people with life experiences, backgrounds, and perspectives different from yours. The ability to attain that global experience is what drew me to the industry, and I’m looking forward to having that international experience.”

2021-2022 GRADUATE OUTCOMES

DISCIPLINES & MAJORS [†]	Number of Graduates	Number Responded	Response Rate	Secured First Destination	Employed	Continuing Education	Volunteer/Service	Seeking	Other
Astronomy & Physics	156	71	46%	93%	49%	44%	0%	7%	0%
Biological Sciences	469	231	49%	93%	37%	56%	0%	7%	0%
Chemical Engineering & Chemistry	282	170	60%	98%	64%	33%	1%	2%	0%
Communication	277	131	47%	93%	62%	31%	0%	7%	0%
Earth, Society, & Environment	114	61	54%	97%	49%	48%	0%	3%	0%
Economics	414	277	67%	86%	65%	21%	0%	14%	0%
English & Creative Writing	117	55	47%	91%	53%	38%	0%	9%	0%
History & Philosophy	140	76	54%	95%	53%	42%	0%	5%	0%
Literatures, Cultures, & Linguistics	147	77	52%	92%	47%	45%	0%	8%	0%
Mathematics & Statistics	678	384	57%	98%	53%	45%	0%	2%	<1%
Political Science, Global Studies, & Area Studies	290	150	52%	97%	52%	45%	0%	3%	0%
Psychology	563	285	51%	93%	35%	58%	0%	7%	0%
Sociology, Anthropology & Interdisciplinary Cultural Studies	148	83	56%	83%	38%	45%	0%	17%	0%
All Liberal Arts & Sciences	3,286	1,747	53%	94%	52%	42%	<1%	6%	<1%

[†]See Colleges and Majors tables at the end of the Methods section for notes on these majors.

SELECT EMPLOYERS

Abbott Laboratories	Cleveland Browns	Illinois Student Assistance Commission	Microsoft
Accenture	Deloitte	Illinois Sustainable Technology Center	Nathan Wright Landscape Design
Amazon	Eli Lilly & Co.	Instagram	Northrop Grumman
Capital One	Epic Systems	International Sports Management	PepsiCo
Caravel Autism Health	EY	Japan Exchange and Teaching	PwC
Cargill	Federal Bureau of Investigation (FBI)	Program (JET)	Rush University Medical Center
Chicago Public Schools	Google	JPMorgan Chase	Teach for America
Chicago Speech Therapy	Illinois House of Representatives	MakerGirl	United Airlines

SELECT GRADUATE AND PROFESSIONAL SCHOOLS

American University	Duke University	National University of Health Sciences	University of California, Los Angeles
Brown University	Georgetown University	New York University	University of Chicago
Carle Illinois College of Medicine	Georgia Institute of Technology	Northwestern University	University of Illinois Chicago
Carnegie Mellon University	Harvard University	Rice University	University of Pennsylvania
Columbia University	Johns Hopkins University	School of The Art Institute of Chicago	University of Wisconsin-Madison
Cornell University	Loyola University Chicago	Stanford University	

ANNUAL SALARY OF FULL-TIME EMPLOYED GRADUATES

DISCIPLINES & MAJORS ⁺	Employed Graduates	Graduates Reporting Salary	Average Salary	25th Percentile	50th Percentile	75th Percentile	Graduates Reporting Signing Bonus	Median Signing Bonus
Astronomy & Physics	35	16	\$94,227	\$75,000	\$100,000	\$129,000	7	\$27,775
Biological Sciences	83	28	\$48,591	\$39,000	\$48,000	\$56,500	9	\$5,000
Chemical Engineering & Chemistry	109	76	\$75,501	\$71,000	\$75,000	\$79,500	14	\$7,250
Communication	77	18	\$53,667	\$45,000	\$50,000	\$70,000	5	\$5,000
Earth, Society, & Environment	27	15	\$50,277	\$39,000	\$45,000	\$55,000	—	—
Economics	176	110	\$72,851	\$60,000	\$70,000	\$83,000	62	\$7,500
English & Creative Writing	29	10	\$50,005	\$36,192	\$51,500	\$60,000	—	—
History & Philosophy	39	11	\$50,999	\$37,050	\$43,000	\$72,620	—	—
Literatures, Cultures, & Linguistics	34	15	\$67,250	\$51,500	\$56,500	\$82,500	5	\$5,000
Mathematics & Statistics	201	110	\$107,122	\$77,500	\$100,000	\$129,000	85	\$10,500
Political Science, Global Studies, & Area Studies	74	22	\$57,595	\$50,000	\$60,000	\$65,000	5	\$5,000
Psychology	95	35	\$49,452	\$35,000	\$44,000	\$52,000	10	\$7,500
Sociology, Anthropology & Interdisciplinary Cultural Studies	30	9	\$52,801	\$40,000	\$54,000	\$65,000	—	—
All Liberal Arts & Sciences	881	413	\$74,705	\$52,000	\$72,000	\$85,000	186	\$10,000

College of Media



GRADUATE STORIES

Bora Shim

Computer Science + Advertising, May 2022

“The American Advertising Federation (AAF) was the RSO that opened me up to look into the advertising world. I had this interest in art and wanted to express my creativity, but in a more applied way. That’s how I came upon this CS + Advertising route and how I met a lot of my friends.”

2021-2022 GRADUATE OUTCOMES

DEPARTMENT	Number of Graduates	Number Responded	Response Rate	Secured First Destination	Employed	Continuing Education	Volunteer/Service	Seeking	Other
Advertising [†]	205	121	59%	88%	77%	11%	0%	12%	<1%
Journalism	58	36	62%	92%	53%	39%	0%	8%	0%
Media & Cinema Studies	38	21	55%	76%	62%	14%	0%	24%	0%
All Media	301	178	59%	87%	70%	17%	0%	12%	<1%

[†] See College and Majors tables at the end of the Methods section for notes on these majors.

SELECT EMPLOYERS

AbelsonTaylor	Dow Jones	Ketchum	Sneaker News
Accenture	Edelman	KOIN-TV	SOCIALDEVIANT
ALDI	Energy BBDO	LaSalle Network	Tenacious Group
Amazon	Epic Systems	Lumen Technologies	The Kraft Heinz Company
Amazon Ads	FCB Chicago	Mediaocean	The News-Gazette
AMC Networks	FleishmanHillard Korea	Medline Industries	The Salvation Army
American Brain Tumor Association	Game Show Network	MERGE	TTR Sothebys International Realty
Ascent Integrated Tech	Gap	Minnesota Vikings	Twisted Journey Photography
Batory Foods	Global Overview	MotionPoint	VMLY&R Commerce
Bonsai Data Solutions	Golin - Go All In	MRI Software	Walgreens
Brad Schneider for Congress	Google	Oracle	Waterman Broadcasting
Canvas Worldwide	Gray Media Group	Paramount	WCIA
CDW	Hormel Foods	Pegula Sports and Entertainment	WICD-TV
Collective Measures	Hyundai TRANSYS	Pivot Design	Wieden + Kennedy
Complete Weddings + Events	Illinois Department of Transportation	Purpose Brand	Willis Towers Watson
Dentsu	Jill Schmidt Public Relations	Sam's Club	WTTW
Digitas	Julius Influencer Marketing	Shaker Recruitment Marketing Agency	Yishi Foods

SELECT GRADUATE AND PROFESSIONAL SCHOOLS

Carnegie Mellon University	DePaul University, College of Law	University of Missouri-Columbia	University of Southern California
Columbia University	Northwestern University	University of Notre Dame	Wake Forest University

ANNUAL SALARY OF FULL-TIME EMPLOYED GRADUATES

DEPARTMENT	Employed Graduates	Graduates Reporting Salary	Average Salary	25th Percentile	50th Percentile	75th Percentile	Graduates Reporting Signing Bonus	Median Signing Bonus
Advertising [†]	91	31	\$57,367	\$50,000	\$53,000	\$65,000	14	\$2,250
Journalism	18	7	\$54,857	\$36,000	\$58,000	\$72,000	—	—
Media & Cinema Studies*	19	6	\$34,167	\$30,000	\$30,500	\$35,500	—	—
All Media	121	42	\$54,195	\$44,000	\$52,000	\$60,000	18	\$2,250

* See note on salary tables in the Methods section.

School of Social Work



GRADUATE STORIES

Abbey Malbon

Social Work, May 2022

“Right off the bat I was really interested in social work on a macro-level more so than the micro-level. I was really happy to know that at Illinois I would be able to coordinate the program to work toward my needs and interests.”

2021-2022 GRADUATE OUTCOMES

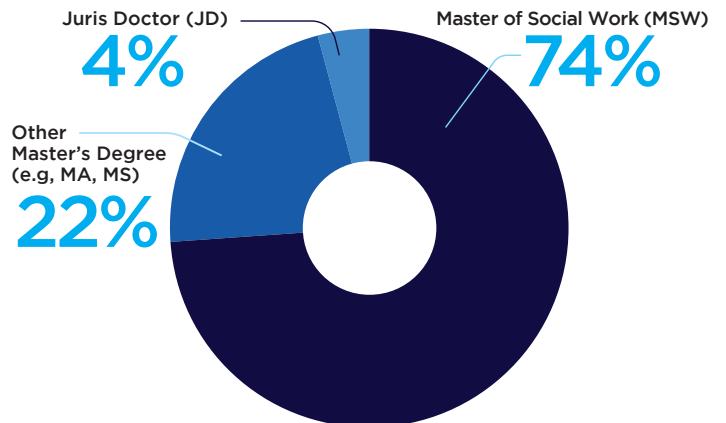


SELECT EMPLOYERS

American Indian Center of Arkansas
Council on International Educational Exchange (CIEE)

Northwestern Medicine Delnor Hospital
Safe Passage
Skokie Park District
The Refugee Center

DEGREES SOUGHT



SELECT GRADUATE AND PROFESSIONAL SCHOOLS

Aurora University
Carlow University
Case Western Reserve University
Loyola University Chicago
New England Law | Boston
The Chicago School of Professional Psychology
University of California, Los Angeles

University of Chicago
University of Illinois Chicago
University of Illinois Urbana-Champaign
University of Louisville
University of Michigan
Washington University in St. Louis

ABOUT GRADUATE OUTCOMES DATA COLLECTION



METHODS

The Illini Success initiative documents the post-graduate outcomes of bachelor’s degree recipients from the University of Illinois Urbana-Champaign. This report focuses on experiences of Illinois students who graduated during the 2021-2022 academic year, including August 2021, December 2021, and May 2022 graduation cohorts. Those who receive both bachelor’s and master’s degrees in the same semester are excluded from these analyses. Lists of graduates were initially drawn from University records during the semester of graduation, and were finalized ten weeks after graduation to represent an accurate picture of the graduating class for each cohort.

Data Collection

The primary method for collecting graduate outcomes data was an online survey administered by Illini Success team members at the Center for Innovation in Teaching and Learning at the University of Illinois Urbana-Champaign. Several strategies were used to distribute the survey including: centralized emails, college-specific emails, and requests during capstone classes and related college events. Requests to complete the survey were sent approximately one month before graduation, at graduation, three-months post-graduation, and six-months post-graduation. Direct surveys of graduates were the primary and preferred source of data. However, when survey data were not available, other sources of information were considered. For example, data on continuing education enrollment was obtained from the National Student Clearinghouse and verifiable graduate outcomes reported by employers or gathered by colleges were accepted into the data set. Finally, very limited information from LinkedIn profiles was included after a careful study of the quality of this data. Service provided by LiveAlumni was used to gather graduate information from publicly available LinkedIn

profiles in December 2022. This data was included for only those graduates who: (a) did not have survey responses, National Student Clearinghouse data, employer reports, or college reports of their outcomes, (b) had employment or international graduate school data from their LinkedIn profile, and (c) posted the start-date for their most current position at least one month after their graduation month. The rationale for these decisions came from a study conducted by the research team at The Career Center. Findings of that study are available by request.

Post-graduate outcomes were identified for 59% of the graduates. As can be seen in **Table M1**, just over half of the outcomes responses for this report came from survey responses (55%), while a smaller amount came from secondary sources (45%). Knowledge rates vary considerably across colleges and majors. Throughout the report, sample size and knowledge rates are reported to help make appropriate use of the data. As with all data sets, careful interpretation of the results is encouraged.

Table M1
Sources of Graduate Outcomes Data

Graduate Outcomes Source	Number of Graduates	Percent of Graduates
Primary Source	2,618	32%
Survey	2,191	27%
Survey + Secondary Source	427	5%
Secondary Source	2,155	27%
National Student Clearinghouse	1,088	13.4%
College Report	345	4.3%
Employer Report	6	0.1%
Social Media	716	8.8%
No Response	3,329	41%
Total Knowledge Rate	4,773	59%

METHODS CONTINUED

Data was collected for six months past the May 2022 graduation date, closing data collection in mid-November 2022. For August and December 2021 graduates, data was accepted through mid-November 2022, but there was not a rigorous pursuit of responses after their initial six-month time periods. Graduate numbers and knowledge rates by cohort can be seen in **Table M2**.

Table M2
Numbers of Graduates and Knowledge Rates by Graduate Cohort

	A	B	C	D	E
Graduation Cohort	Number of Graduates	Number of Respondents	Knowledge Rate by Cohort	Percent of Total Graduates	Percent of Total Knowledge Rate
August 2021	469	210	45%	6%	4%
December 2021	1,341	724	54%	17%	15%
May 2022	6,292	3,839	61%	78%	80%
Total	8,102	4,773			
Definitions:			(by rows, B/A)	(by columns, Row A/Total A)	(by columns, Row B/Total B)

Privacy and Confidentiality

The privacy and confidentiality of Illinois graduates is highly respected and protected throughout the Illini Success initiative. The willingness of Illinois graduates to share their outcomes information is greatly appreciated, and every effort is made to ensure their comfort and confidence at every stage of participation. All data efforts related to the Illini Success initiative are approved by the University of Illinois Institutional Review Board. A limited number of research team members are granted access to the data. All personally identifying information is removed from presentations of data. To further protect confidentiality, outcomes data is only reported in aggregate, for groups of 10 graduates or more.

In college and major salary analysis tables, when there are fewer than ten employed graduates and fewer than five graduates reporting a salary in 2021-2022, responses are combined with the 2020-2021 class in order to provide salary information while protecting the confidentiality

and privacy of survey respondents. All cases where this occurs are indicated with a star (*) and “employed graduates” and “graduates reporting salary” reflect the total number across the two years. If sufficient numbers cannot be reached by combining two years of data, salary information is not presented in the report. For colleges or majors where fewer than five graduates report a signing bonus in 2021-2022, dashes are used to indicate that signing bonus information cannot be shared.

Illini Success only identifies graduates when they give permission to share their information or likeness. When they do so, graduates state specifically what they want to share, and nothing beyond that is released. For example, the Illini Success website presents graduate success stories with photographs and personalized narratives. Being highlighted on the website is voluntary and individuals sign a talent release form to participate.

Terms and Categories

To understand analyses in this report, it is helpful to understand some key terminology that is used to define outcomes and categorize variables.

When completing the online survey, Illinois graduates were asked about their plans following graduation and were given the following response options: working full-time, working part-time, enrolling in additional education, engaged in military service, engaged in volunteer service, seeking employment, seeking additional education, not seeking employment or education at this time, and I'd rather not answer. For ease of interpretation in this overview report, we combine these nine response options into the following five categories:

- **Employed**, which includes: (a) working full-time, (b) working part-time, and (c) engaged in military service
- **Continuing education**
- **Volunteer / service**
- **Seeking**, which includes: (a) seeking employment, and (b) seeking education
- **Other**, which includes not seeking employment or education at this time

“I'd rather not answer” is treated similar to a non-response to the question. Little detail was lost in combining groups. In the employment section, small percentages of respondents pursued military careers (<1%) or part-time employment (1%). Small percentages of respondents indicated that they were “seeking education” (1%) and “seeking employment” (4%). Graduates were invited to select responses regarding their post-graduation plans in two ways. First, they selected all statuses that applied to them. For example, a graduate may report both working full-time and being engaged in volunteer work in the community. Second, graduates were asked to select one primary status that best represents their main focus after graduation. Continuing the example, the graduate may identify working full-time as a primary status. This report focuses on graduates' reported primary statuses.

Further, this report identifies graduates who have “**secured a first destination**” following graduation. This is defined as obtaining employment, enrolling in a continuing education program, and/or engaging in volunteer service as a primary status after graduation.

Data Analysis and Presentation

Analyses in this report were informed by standards and guidelines set by the National Center for Education Statistics (NCES, 2012). Unless otherwise noted, findings are presented by unique graduates without duplication. A few tables present results by academic major. In these tables, duplicate counts exist because graduates can complete both double majors and dual degrees at the bachelor's degree level. When a graduate completes more than one major and/or degree, their outcomes data are recognized in each appropriate category for the bachelor's degree and majors they have completed.

To support ease of reading for various audiences, non-respondents were excluded from each graph, table, and data point (rather than including sections of non-respondents with each question). This decision was

made because respondent numbers change throughout the report as different graduates had access to different survey questions. For example, graduates who selected “continuing education” as their primary status did not receive survey questions about “employment.” Throughout the report, the number of respondents (N) is provided with the data for each survey question.

Finally, there is some grouping of majors in this report in order to represent relationships across academic units, to be able to present data for small majors while protecting confidentiality of graduates, or to efficiently and effectively communicate results without overwhelming detail. Please see the tables in the concluding pages of this report, which outline how majors are represented for each college, and show where combinations have occurred.

For Additional Information

For additional information on this report or the Illini Success initiative, **please contact the Illini Success team at illinisuccess@illinois.edu or (217) 333-0820.**

References

National Center for Education Statistics. (2012). 2012 revision of NCES statistical standards: Final. U.S. Department of Education, Institute of Educational Statistics. Retrieved from <http://nces.ed.gov/statprog/2012>.

College of Agricultural, Consumer and Environmental Sciences

Report Category	Departments Included	Majors Included
Agricultural and Consumer Economics	Agricultural and Consumer Economics	Agricultural and Consumer Economics
Agricultural Leadership, Education, and Communication	Agricultural Leadership, Education, and Communication	Agricultural Communications; Agricultural Leadership, Education, and Communication; Agricultural Leadership and Science Education
Animal Sciences	Animal Sciences	Animal Sciences
Crop Sciences and Horticulture	Crop Sciences	Agronomy; Computer Science & Crop Sciences; Crop Sciences; Plant Biotechnology
Food Science and Human Nutrition	Food Science and Human Nutrition	Food Science and Human Nutrition
Human Development and Family Studies	Human Development and Family Studies	Human Development and Family Studies
Natural Resources and Environmental Sciences	Natural Resources and Environmental Sciences	Natural Resources and Environmental Sciences
Technical Systems Management	Agricultural and Biological Engineering	Technical Systems Management

College of Applied Health Sciences

Report Category	Departments Included	Majors Included
Community Health	Kinesiology and Community Health	Community Health
Interdisciplinary Health Sciences	Interdisciplinary Health Sciences	Interdisciplinary Health Sciences
Kinesiology	Kinesiology and Community Health	Kinesiology
Recreation, Sport, and Tourism	Recreation, Sport, and Tourism	Recreation, Sport, and Tourism
Speech and Hearing Science	Speech and Hearing Science	Speech and Hearing Science

Gies College of Business

Report Category	Departments Included	Majors Included
Accountancy	Accountancy	Accountancy
Finance	Finance	Finance
Information Systems & Information Technology	Business Administration	Information Systems; Information Systems & Information Technology
Management	Business Administration	Management
Marketing	Business Administration	Marketing
Operations Management	Business Administration	Operations Management
Supply Chain Management	Business Administration	Supply Chain Management

College of Education

Report Category	Departments Included	Majors Included
Early Childhood and Elementary Education	Curriculum and Instruction	Early Childhood Education; Elementary Education
Learning and Education Studies	Education Administration	Learning and Education Studies
Middle Grades Education	Curriculum and Instruction	Middle Grades Education
Special Education	Special Education	Special Education

The Grainger College of Engineering

Report Category	Departments Included	Majors Included
Aerospace Engineering	Aerospace Engineering	Aerospace Engineering
Agricultural and Biological Engineering	Engineering Administration	Agricultural and Biological Engineering
Bioengineering	Bioengineering	Bioengineering
Civil Engineering	Civil and Environmental Engineering	Civil Engineering
Computer Engineering	Electrical and Computer Engineering	Computer Engineering
Computer Science	Computer Science	Computer Science
Electrical Engineering	Electrical and Computer Engineering	Electrical Engineering
Industrial Engineering	Industrial and Enterprise Systems Engineering	Industrial Engineering
Materials Science & Engineering	Materials Science & Engineering	Materials Science & Engineering
Mechanical Science and Engineering	Mechanical Science and Engineering	Engineering Mechanics; Mechanical Engineering
Nuclear, Plasma & Radiological Engineering	Nuclear, Plasma & Radiological Engineering	Nuclear, Plasma & Radiological Engineering
Physics	Physics	Engineering Physics; *also Physics majors from the College of Liberal Arts and Sciences
Systems Engineering & Design	Industrial & Enterprise Systems Engineering	Systems Engineering & Design

***Note** that due to strong cross-campus partnerships and overlaps in course offerings between Engineering Physics (in The Grainger College of Engineering) and Physics (in the College of Liberal Arts and Sciences) these two majors are presented together in the Illini Success college-level tables. In The Grainger College of Engineering tables, they are included in the Major category of "Physics."

College of Fine + Applied Arts

Report Category	Academic Units Included	Majors Included
Architecture	Architecture	Architectural Studies
Art and Design	Art and Design	Art and Art History; Art Education; Graphic Design; Industrial Design; New Media; Painting; Photography; Sculpture; Studio Art
Dance, Music, and Theatre	Dance; Music; Theatre	Computer Science & Music; Dance; Instrumental Music; Jazz Performance; Lyric Theatre; Music; Music Composition; Music Education; Open Studies; Theatre; Voice
Landscape Architecture and Urban and Regional Planning	Landscape Architecture; Urban and Regional Planning	Landscape Architecture; Sustainable Design; Urban Studies and Planning

School of Information Sciences

Report Category	Departments Included	Majors Included
Information Sciences	Information Sciences	Information Sciences

College of Liberal Arts & Sciences

Report Category	Departments Included	Majors Included
Astronomy and Physics	Astronomy; LAS Administration	Astronomy; Computer Science & Astronomy; Physics; *also Engineering Physics majors from The Grainger College of Engineering
Biological Sciences	Biochemistry; School of Integrative Biology; School of Molecular and Cellular Biology	Biochemistry; Integrative Biology; Molecular and Cellular Biology
Chemical Engineering and Chemistry	Chemical & Biomolecular Engineering; Chemistry	Chemical Engineering; Chemistry; Computer Science & Chemistry
Communication	Communication	Communication; Speech Communication
Earth, Society and Environment	Atmospheric Sciences; Geography and Geographic Information Science; Geology; School of Earth, Society, and Environmental Administration	Atmospheric Sciences; Computer Science & Geography & Geographic Information Science; Geography and Geographic Information Science; Geology; Earth, Society, and Environmental Sustainability
Economics	Economics	Computer Science & Economics; Econometrics & Quantitative Economics; Economics
English and Creative Writing	English	Creative Writing; English
History and Philosophy	History; LAS Administration; Philosophy	Computer Science & Philosophy; History; History of Art; Philosophy
Literatures, Cultures and Linguistics	Classics; Comparative & World Literature; E Asian Languages and Cultures; French and Italian; Germanic Languages and Literature; Linguistics; Religion; Slavic Languages & Literature; Spanish and Portuguese	Classics; Comparative & World Literature; Comparative Literature; E. Asian Languages and Cultures; Germanic Studies; French; Italian; Linguistics; Religion; Spanish; Teaching of Spanish
Mathematics and Statistics	Mathematics; Statistics	Actuarial Sciences; Math & Computer Science; Mathematics; Statistics; Statistics & Computer Science
Political Science, Global Studies, and Area Studies	LAS Admin.; Political Science; Russian, E. European, Eurasian Center	Global Studies; Political Science; Russian, E. European, Eurasian Studies
Psychology	Psychology	Brain and Cognitive Science; Psychology
Sociology, Anthropology & Interdisciplinary Cultural Studies	African American Studies; Anthropology; Asian American Studies; Gender & Women's Studies; LAS Administration; Latin American and Caribbean Studies; Latina/Latino Studies; Sociology	African American Studies; Anthropology; Asian American Studies; Computer Science & Anthropology; Gender & Women's Studies; Individual Plans of Study; Interdisciplinary; Latin American Studies; Latina/Latino Studies; Sociology

*Note that due to strong cross-campus partnerships and overlaps in course offerings between Physics (in the College of Liberal Arts & Sciences) and Engineering Physics (in The Grainger College of Engineering) these two majors are presented together in the Illini Success college-level tables. In the College of Liberal Arts & Sciences tables, they are included in the Discipline and Major category of "Astronomy and Physics."

College of Media

Report Category	Departments Included	Majors Included
Advertising	Advertising	Advertising; Computer Science & Advertising
Journalism	Journalism	Journalism
Media and Cinema Studies	Institute of Communications Research; Media and Cinema Studies	Media and Cinema Studies

School of Social Work

Report Category	Departments Included	Majors Included
Social Work	Social Work	Social Work